



morton.

Macquarie Park 1602/23 Halifax Street

 2  2  1

Great opportunity to lease this near new two bedroom on level 16 in NBH at Lachlan's Line. This iconic development is perfectly positioned above a bustling town square at the heart of the new Lachlan's Line masterplan.

- Generous open plan design with timber floorboards throughout living areas
- Quality designer kitchen with Miele gas appliances
- 100+ sqm including three generous and private balconies
- Modern bathroom has floor to ceiling tiles, mirrored vanity cabinets
- Oversized bedrooms with built-in robe, abundance of natural light
- Large entertainer's balcony with great views
- Abundant storage throughout
- One car space and one storage cage
- Video intercom, laundry with dryer, air-conditioning, NBN internet
- Lush landscaped gardens, pool & BBQ, onsite building manager-


View

As advertised or by appointment

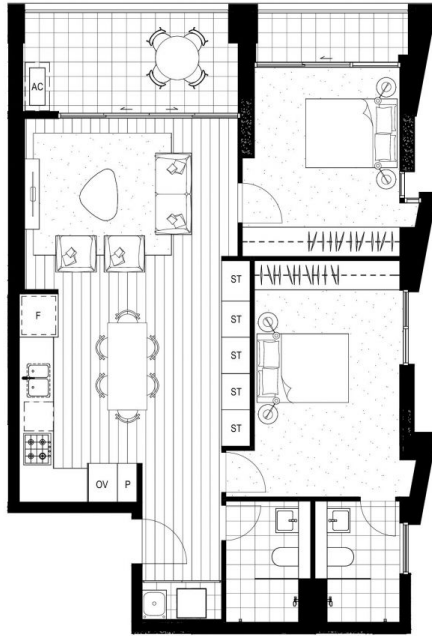
Agent

Joseph Youll

 0410 593 248

 joseph.youll@morton.com.au

morton.com.au



2B.04_C	
Internal Area	76-80m ²
External Area	10-14m ²
Total Area	86-94m ²

HABITAT

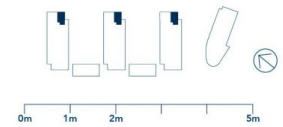
13.02

HIDEAWAY

13.02, 15.02, 16.02,

HEARTH

13.02, 15.06, 16.02



NBHSYDNEY.COM

1800 388 788

REV D_01.06.18

Refer to General Arrangement Plans for specific unit locations, orientation and context. Note that all graphics including balustrades, glazing units, door units and the like should be taken to be indicative only. Window locations and operable window and door units are shown as indicative only and are subject to change. Ducts and air-conditioning units and their locations are shown as minimal and are subject to change. Floor plans are at an unspecified scale. All internal and external unit areas and sizes are indicated as approximate only and are subject to final strata survey. *N.B. - possible window position for each individually listed unit only. Refer to the General Arrangement Plans for exact window and door positions for each individual unit. Please note that this floor plan was produced prior to construction. The information here is believed to be correct but is not guaranteed. Changes may be made during construction and dimensions, areas, fittings and specification are subject to change without notice in accordance with the provisions of the contract for sale. The furniture and furnishings depicted are not included with and sale and purchase must refer to the contract for sale for a list of inclusions. The position of furniture and furnishings should not be taken to be indicative of final positions of power points, TV connection points and the like. Prospective purchasers must rely on their own enquiries. Bulkheads for services are not depicted.