



morton.

Wentworth Point 487/4 The Crescent

 2  2  1

Enjoy the best of resort-style community living in this well designed home in the acclaimed The Waterfront lifestyle precinct. What sets this modern residence apart from a traditional two-bedroom apartment is its clever two-story layout that has a bedroom and bathroom on each level, along with its elevated position that captures amazing views across the water.

- A relaxing outlook over palm trees, swimming pool and water
- Open plan living space that connects easily with the outdoors
- Good-sized entertainment terrace plus two additional balconies
- Lower-level master bedroom with ensuite and built-in wardrobe
- A modern open kitchen with gas fittings and an internal laundry
- Ducted air-conditioning, intercom entry and a car space on title
- In the sought-after Valencia building with access to a resort pool

morton.com.au

View

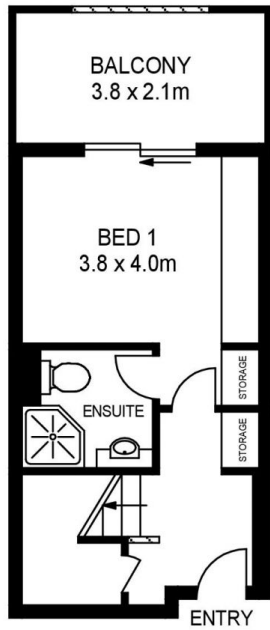
As advertised or by appointment

Agent

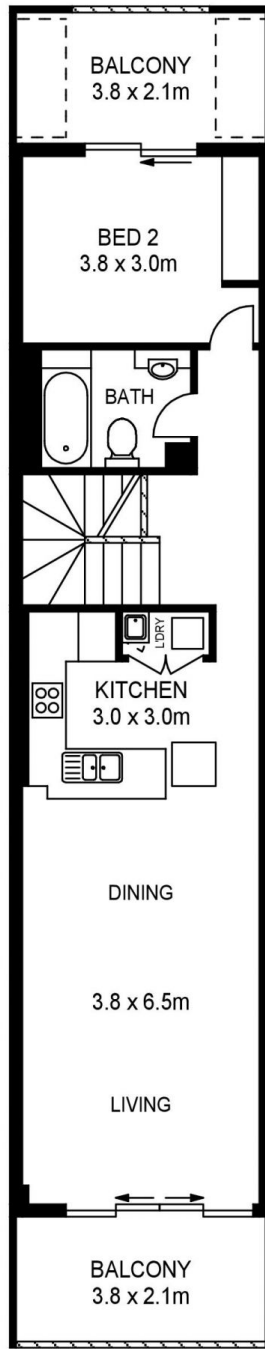
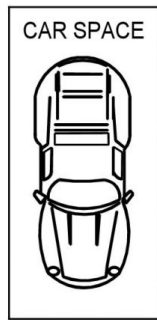
Sarah Fowell

 0437 492 129

 rentals@morton.com.au



LOWER LEVEL



UPPER LEVEL

APPROX. INT. AREA : 90 m²
 APPROX. EXT. AREA : 16 m²
 TOTAL AREA INCLUDING CAR SPACE AND STORAGE : 106 m²

487/4 THE CRESCENT, WENTWORTH POINT



Please note these measurements are approximate only. The plans is intended as a rough guide for illustrative purpose. It is not warranted or guaranteed to be correct nor it is part of the sale or rental contract

