



morton.

Zetland 1120/5 O'Dea Avenue

 2  1  1

Sold by Calvin Chan 0406 888 028

In the heart of the immensely popular Zetland community just minutes to the city and airport, this deluxe two-bedroom residence displays contemporary sparkle and easy convenience. It sits in an elevated position with city views and features a generous single level floorplan that's ideally configured to meet the needs of low maintenance lifestyle seekers.

- North facing views
- City and North Sydney views (can see all fire works across the CBD precinct)
- Walking distance to Green Square train station & east village shopping centre
- Moments from Emerald Park (Zetland)
- Sought after luxury apartment designed by boutique luxury architects Stanasic Architects
- Smeg appliances throughout entire apartment
- Luxurious heated rooftop pool (exclusive access to Building)



morton.com.au

View



As advertised or by appointment

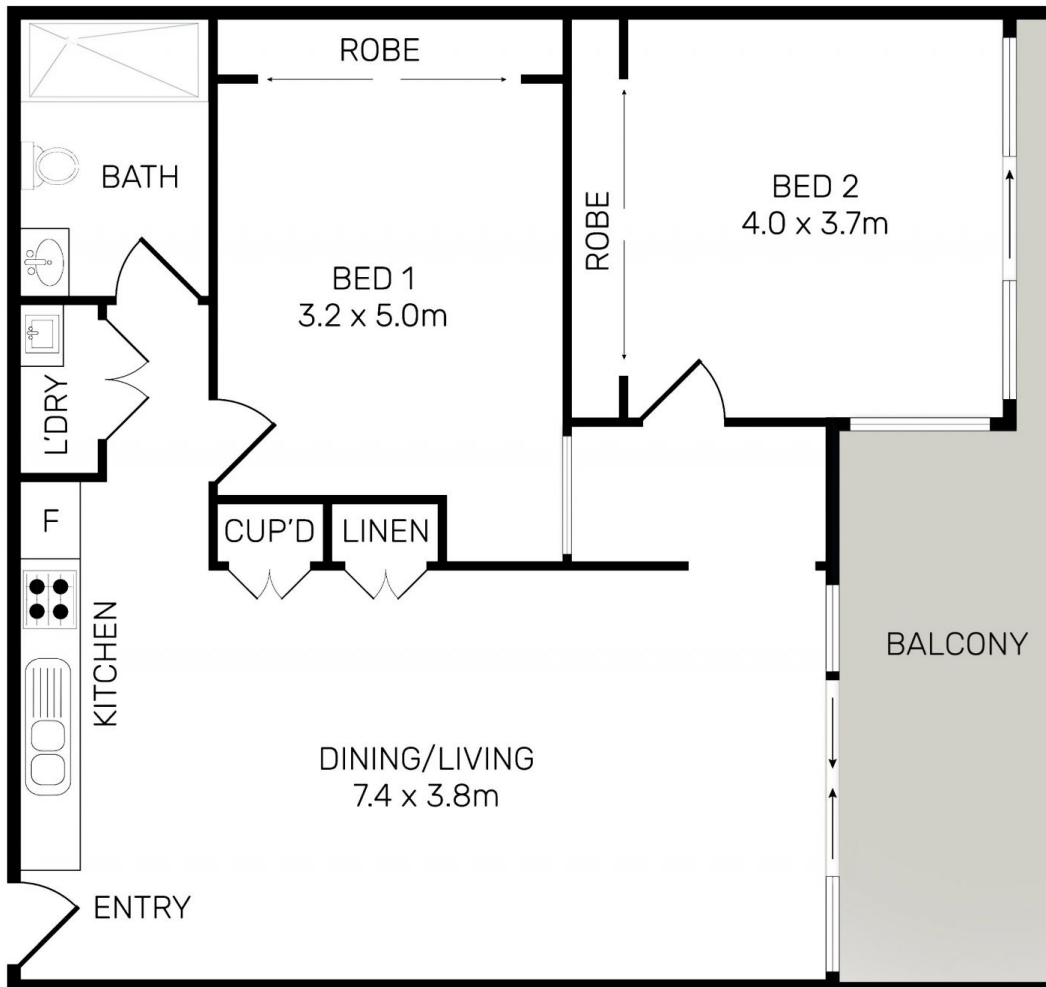
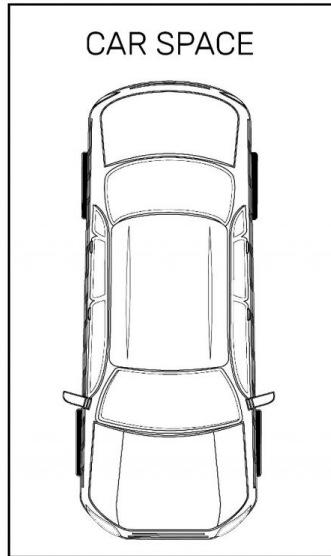
Agents

Calvin Chan

 0406 888 028
 calvin@morton.com.au

Jackson Figueiras

 0448 764 345
 jackson@morton.com.au



All information contained herein is gathered from all sources we believe to be reliable. However we cannot guarantee its accuracy and interested parties should rely on their own enquiries.



morton. **Zetland** 1120/5 O'dea Avenue