



# morton.

**Wentworth Point** A10003/16 Amalfi Street

 2  2  1

The quality of its design and the vibrancy of its waterside location ensure this generous two-bedroom apartment's lifestyle appeal is absolutely irresistible. Set within the exclusive One The Waterfront community and capturing an elevated outlook over the building's landscaped grounds and amenities, it offers a very private retreat that is supremely easy-to-maintain and very well-located with all everyday necessities close to the doorstep.

A well-proportioned open design with excellent natural light  
Sunlit north west facing large terrace with leafy views over parkland  
Smart designer kitchen with an integrated fridge, breakfast island and huge skylight.

Two bedrooms with built-ins, the main opens onto the balcony  
Lift access to a security basement car space plus storage cage  
Air-conditioning, intercom entry and two designer bathrooms  
Smart home features - smart lights, automated blinds, built-in

### View

As advertised or by appointment

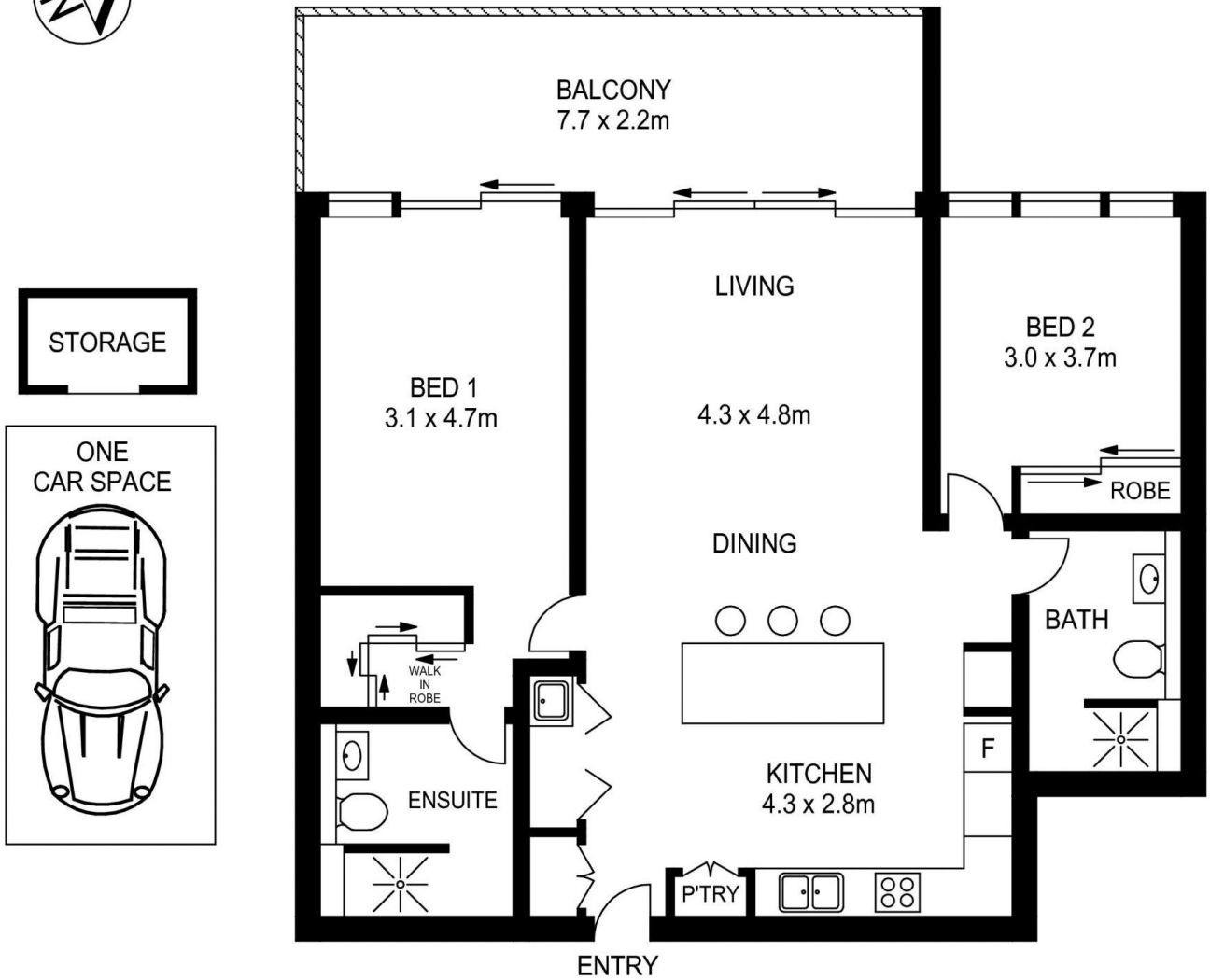
### Agent

**Nevena Petrovic**

 0428 835 910

 [nevena@morton.com.au](mailto:nevena@morton.com.au)

[morton.com.au](http://morton.com.au)



## A10003/16 AMALFI DRIVE, WENTWORTH POINT



[www.assetphotographers.com.au](http://www.assetphotographers.com.au)

Please note these measurements are approximate only. The plans is intended as a rough guide for illustrative purpose. It is not warranted or guaranteed to be correct nor it is part of the sale or rental contract