



morton.

Penrith 206/26C Lord Sheffield Circuit

 2  2  1

This stunning apartment set in the Lumina building in Thornton is right in the middle of Penrith's emerging urban centre. This two bedroom unit has an area of 93sqm worth of indoor/outdoor living space. Located on the 2nd floor, its smart design offers bedrooms on either side of the unit for privacy and comfort.

- Generous 93sqm of living area
- Ducted air con and floorboards throughout
- Large eat in kitchen island bench with 4 burner gas cooktop
- Internal laundry running off the kitchen and study nook
- Two good sized double bedrooms, master with ensuite
- Second bedroom with access to the balcony
- Rooftop BBQ area with pingpong table, swing and pet friendly areas
- Rooftop herb garden for all residents of the building

View

As advertised or by appointment

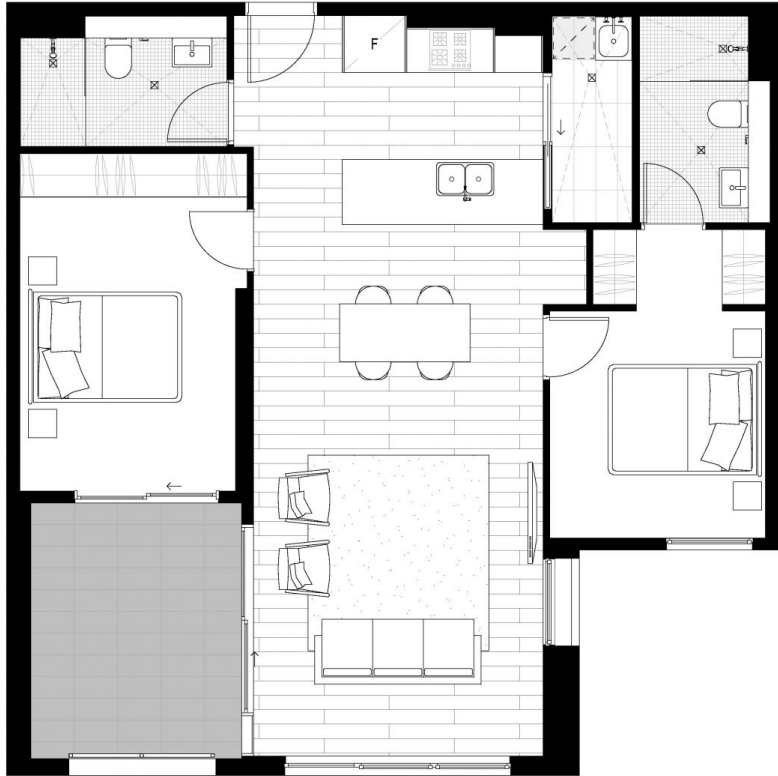
Agent

Anthony Fleming

 0437 929 484

 anthonyf@morton.com.au

morton.com.au



LUMINA

SHEFFIELD QUARTER

THORNTON

TWO BEDROOM
APARTMENT

UNIT 206, 306, 406, 506, 606

INTERNAL AREA 83 m²
EXTERNAL AREA 10 m²

TOTAL 93 m²

PARKING 1



NORTH

URBAN

This floor plan has been prepared for marketing purposes only. All descriptions, dimensions, depictions and other details in this floor plan may not be to scale and may vary from the property as built. Your attention is drawn to the special conditions of the contract for sale of land. No third party has any authority to make or give any representation or warranty in relation to the property unless the representation or warranty is confirmed by Developer and included in the contract for sale of land.