



# morton.

Penrith 505/101A Lord Sheffield Circuit

3 2 1

Leased for \$630per week after the first open home, Anyone interested in a sales or rental appraisal, please contact Anthony Fleming on 0437929484 or by email [anthony.fleming@morton.com.au](mailto:anthony.fleming@morton.com.au)

This rare offering is positioned in what is undoubtedly Penrith's premier boutique estate, this exceptional lifestyle apartment exudes quality throughout with commanding views over Penrith and the Blue Mountains.

- Dual balcony access with panoramic views
- Lift Access to your floor
- Security complex for peace of mind
- Stylish kitchen with stone bench tops and European appliances
- Large internal laundry with dryer
- Reverse cycle air conditioner
- Secure basement parking and storage cage
- Pet friendly body corporate
- Onsite building manager

[morton.com.au](http://morton.com.au)

### View

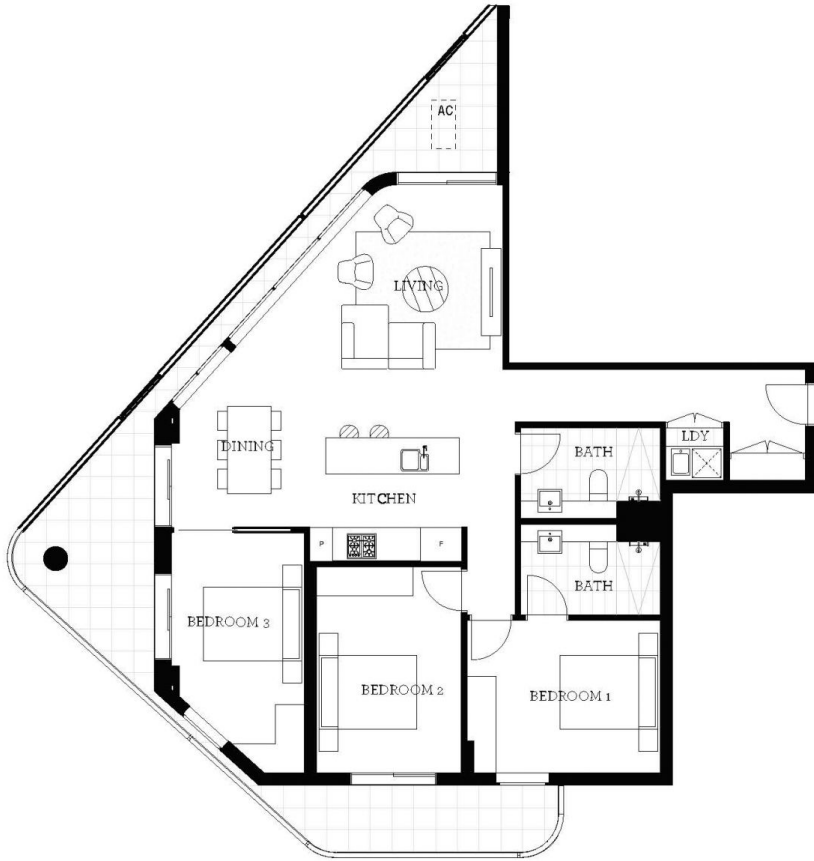
As advertised or by appointment

### Agent

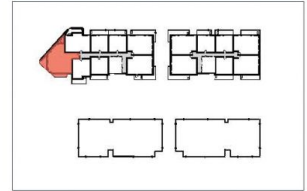
**Anthony Fleming**

0437 929 484

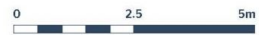
[anthonyf@morton.com.au](mailto:anthonyf@morton.com.au)



# Apartment A505 3 Bed



Internal	105 m <sup>2</sup>
External	27 m <sup>2</sup>
<b>Total</b>	<b>132 m<sup>2</sup></b>



**THORNTON**  
ThorntonCentral.com.au

Disclaimer: This floor plan has been prepared for marketing purposes only. All descriptions, dimensions, depictions and other details in this floor plan together with the information may not be to scale. The vendor reserves the right to vary or amend the information without notice. The information may vary from the actual dimensions, layout and characteristics of the property as built. No third party has any authority whatsoever, either expressly or impliedly, to make or give any representation or warranty or to bind the vendor in connection with the information on the property.  
Date issued: 21/01/2014 Version: 01