



morton.

Neutral Bay 303/19-21 Grosvenor Street

 3  2  2

Spacious interiors, quality design and good natural light are combined to great effect in this Marchese Partners designed Lucca apartment. Set against a leafy district backdrop, it offers a fresh contemporary home that is exceptionally private yet positioned in a location that is all about the attractions of Neutral Bay with cafes, restaurants and wine bars within a short stroll.

- A large open layout with living and dining areas
- Fold-out doors flow out to a sheltered dining terrace
- Designer stone kitchen fitted with Miele gas cooktop
- Three double bedrooms are quietly set to the rear
- Ducted air-con, tandem car space and lock-up storage

View

As advertised or by appointment

Agent

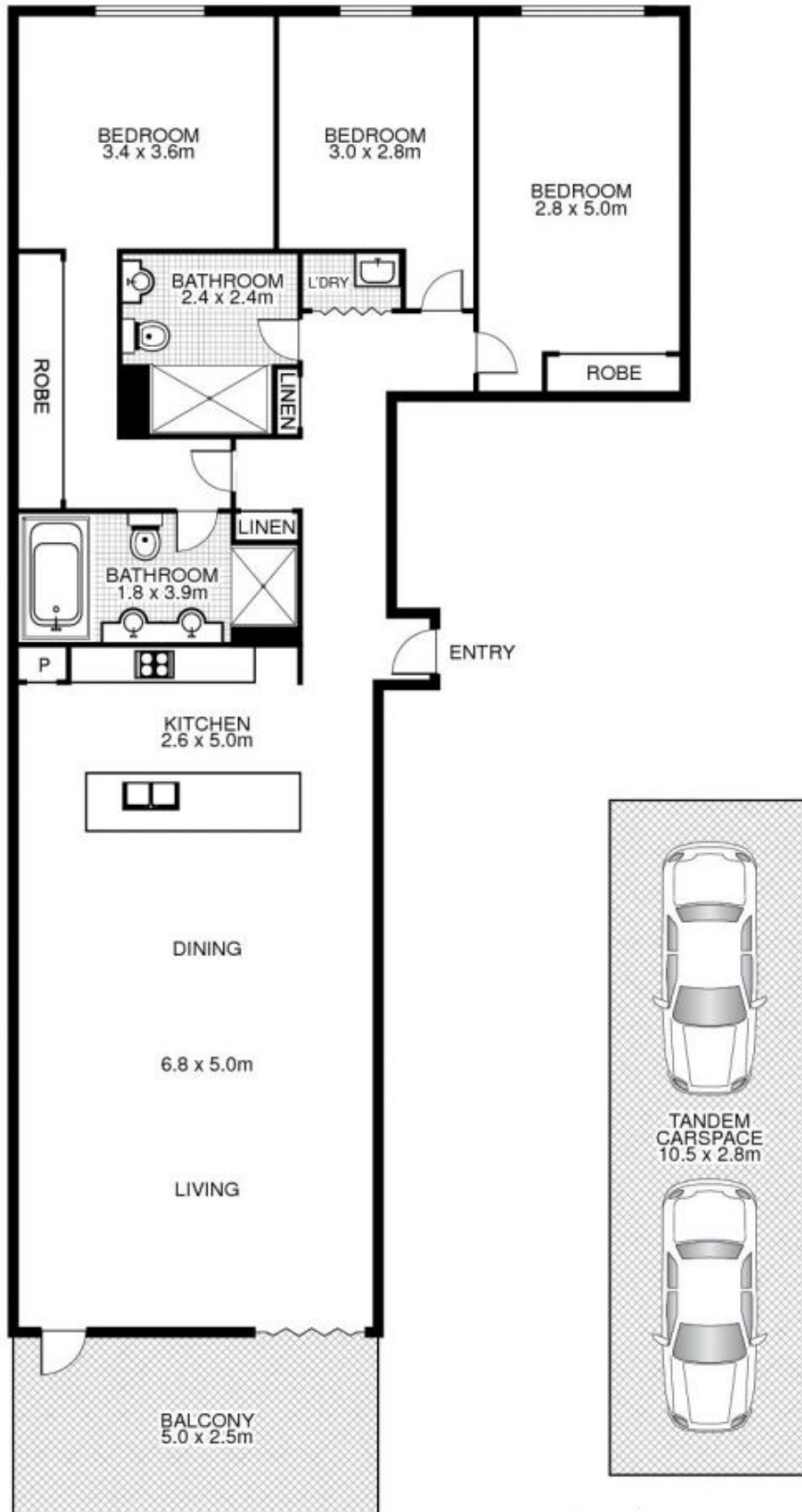
Marcus Wynan

 0447 160 628

 marcus.wynan@morton.com.au

morton.com.au

303/19 Grosvenor Street, NEUTRAL BAY



This floor plan is intended as a guide only. Layout dimensions are approximate only. No representation or warranties of any nature whatsoever are given or intended. Any person using this information should rely on their own enquiries.