



# morton.

**Sydney** 18/17-25 Wentworth Avenue



The Wentworth Towers' apartments are known for their superb location, close to the commercial centres of World Square and Pitt Street Mall. Immediate access to trains and buses is available with Museum station just a few steps away. With the best of this world-class city on your doorstep, here is your opportunity to take your place amongst it all.

- Generous 60sqm floorplan with well-maintained, bright interiors
- Recently updated kitchen and brand new carpet throughout
- Open plan living, dining and kitchen for easy entertaining
- Full width, covered balcony with tree-lined city views
- Double bedroom with dual built-in robes and a full ensuite
- Internal laundry room
- Security building with level lift access and intercom entry
- Sorry no pets

### View

As advertised or by appointment

### Agent

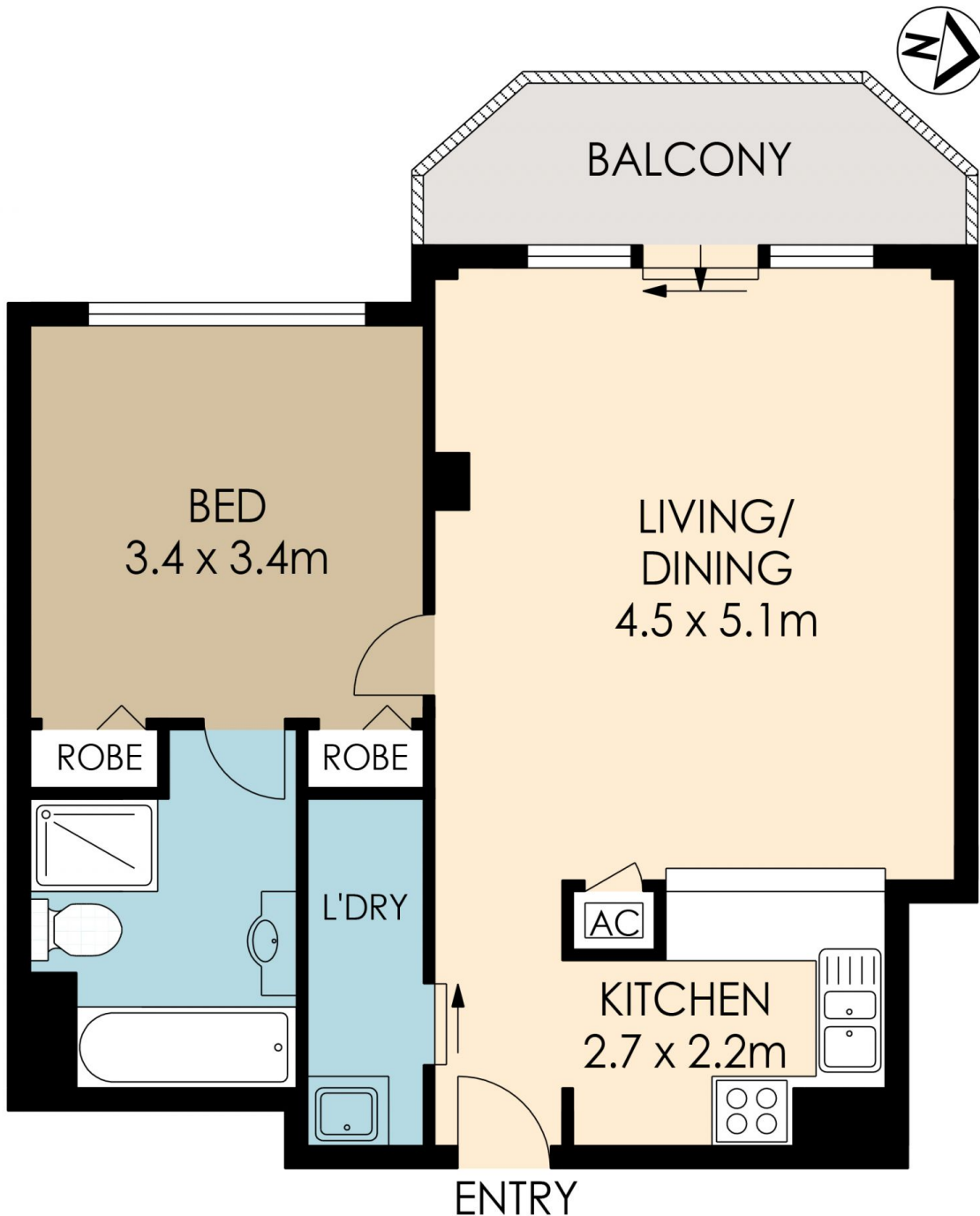
**Christina Tsousta**

📞 0408 577 427

✉️ christina.tsousta@morton.com.au

[morton.com.au](http://morton.com.au)

morton.



18/17-25 Wentworth Avenue, Sydney

The information above is provided in good faith and has been provide to us from a variety of sources. We have not verified whether the information is accurate and do not have any belief one way or other in its accuracy. We do not accept any responsibility to any person for its accuracy and do no more than pass it on. All interested parties should rely on their own inquiries in order to determine whether or not this information is in fact accurate.

Floor Plan by [www.squaremeter.com.au](http://www.squaremeter.com.au)