



morton.

Sydney Olympic Park 726/2B Betty Cuthbert Ave

🛏 2 🚗 2 🚗 2

Style, space and light-filled design combine to create this quality two-bedroom apartment in a premium resort community which earns its reputation with excellence. Capturing an elevated panorama that stretches over parkland to the city skyline, it offers a private and easy-to-maintain retreat that's set high in the well-regarded Botania building. Just around the corner from Bicentennial Park and within strolling distance to the train station, local shops and Sydney's best entertainment venues.

- Total 153 sqm, internal + balcony 115 sqm approx
- A prime top floor position commanding Sydney city and Sydney Harbour Bridge skyline view
- Exclusive access to the building's premium resort amenities
- Bright, airy and open layout with lounge and dining areas
- A wide full-length balcony accessed from all major rooms
- Two great-sized bedrooms both open onto the balcony
- Sleek modern kitchen with stone benches and gas cooking
- A well-appointed bathroom, ensuite and internal laundry
- Double security car spaces plus spacious storage cage and

View

As advertised or by appointment

Agent

Nevena Petrovic

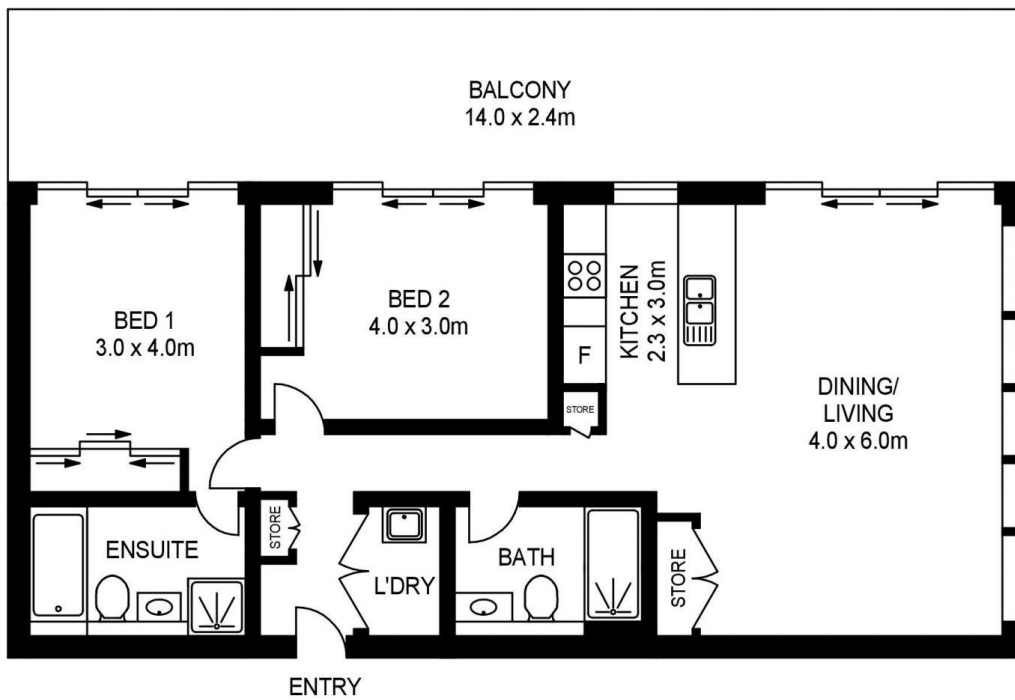
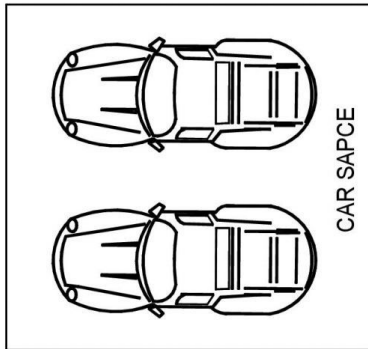
📞 0428 835 910

✉ nevena@morton.com.au

morton.com.au



STORE



726/2B BETTY CUTHBERT AVENUE, SYDNEY OLYMPIC PARK



www.assetphotographers.com.au

Please note these measurements are approximate only. The plans is intended as a rough guide for illustrative purpose. It is not warranted or guaranteed to be correct nor it is part of the sale or rental contract