



morton.

Pyrmont 28/1 Murray Street

 3  2  2

Set in a private and exclusive position with only three apartments per floor, this apartment will delight tenants looking for high-end luxury and prime positioning. Residents enjoy access to the onsite swimming pool and gym plus the tranquil central garden. Single level luxury defines this superb residence. Set in Mirvac's prestige Gateway complex, it offers a home of outstanding quality with spacious proportions and breath taking harbour and city panoramas. This deluxe property showcases a flowing light-filled layout and enjoys a premier location on the doorstep of Darling Harbour, Star Casino, Barangaroo and Sydney's CBD.

- Prime north facing position with inspiring harbour and city views
- Luxury granite kitchen w/ Smeg appliances
- An expansive layout with over 135sqm indoor/outdoor living space
- Large walls of glass that maximise natural light and city views
- A seamless integration with a wide terrace for entertaining


morton.com.au

View

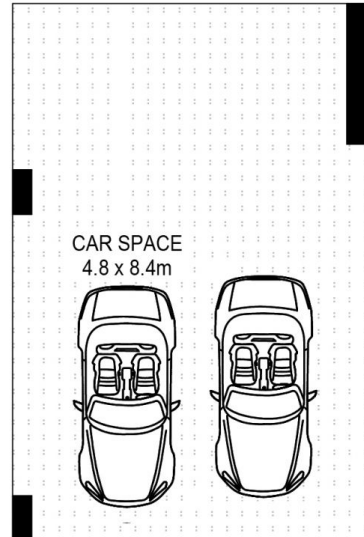
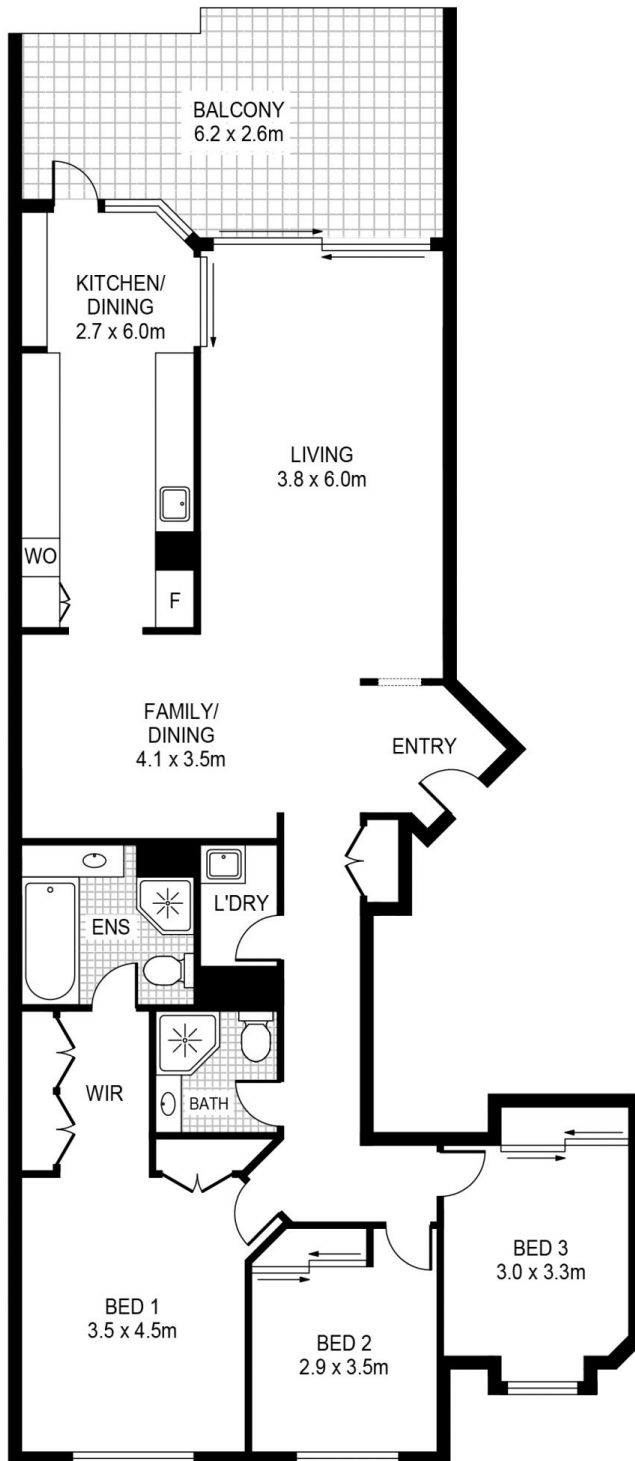
As advertised or by appointment

Agent

Christina Tsousta

 0408 577 427

 christina.tsousta@morton.com.au



PLANS SHOWN ONLY INDICATIVE OF LAYOUT. DIMENSIONS ARE APPROXIMATE.



PYRMONT 28/1 Murray St

morton.