



# morton.

**Wentworth Point** 145/5 Baywater Drive

 1  1  1

Offering a modern blend of fresh design, stylish finishes and easy in/outdoor living, this loft-style courtyard apartment is a light filled haven in a premium waterside community. It has been well-designed to embrace low maintenance living and entertaining, plus it provides a very peaceful retreat with a range of shopping, cafes, parks and transport options at your fingertips.

- Own street entrance via a private entertainment courtyard
- Bright and airy open layout with lounge and dining spaces
- Contemporary kitchen equipped with sleek gas fittings
- Upstairs bedroom with built-ins and ensuite bathroom
- Access to the building's gym, pool and communal gardens
- Air conditioning, internal laundry and video intercom
- Security basement car space plus storage cage on title

### View

As advertised or by appointment

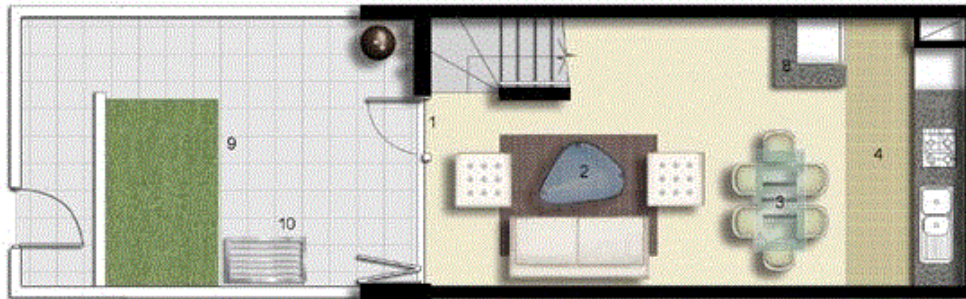
### Agent

**Nevena Petrovic**

 0428 835 910

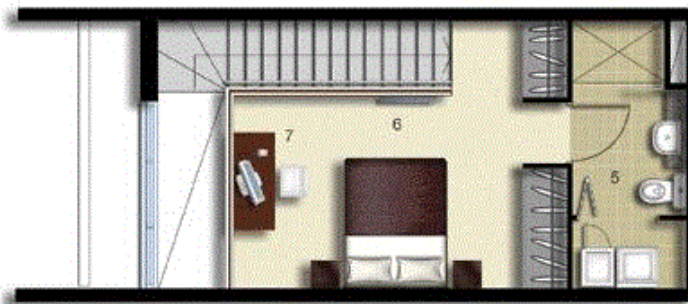
 nevena@morton.com.au

[morton.com.au](http://morton.com.au)

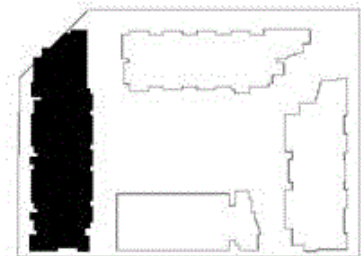


- ENTRY 1
- LIVING 2
- DINING 3
- KITCHEN 4
- ENSUITE/LAUNDRY 5
- BEDROOM 6
- STUDY 7
- STORAGE 8
- TERRACE 9
- CLOTHES DRYING 10

**LEVEL 01**



**LEVEL 02**



# PALERMO

UNIT: **145**

TYPE: 1 Bedroom

UNIT AREA: 60.0 sqm

OUTDOOR AREA: 24.0 sqm



Disclaimer: All layouts are indicative only, and subject to change.



0 2.5 5M