



morton.

Pyrmont 18F/4 Distillery Drive

2 2 2

An elevated position in the highly regarded Sugardock complex gives this stylish apartment a stunning outlook over the harbour. Light filled throughout and capturing sweeping northerly views over the water to the Balmain Peninsula and beyond, it offers a smart and modern living space with generous proportions, many high quality finishes and a terrific location within a stroll to the harbourfront, cafes and light rail transport.

- Designed to take full advantage of the sunlight and views
- A light filled open plan layout that flows to the outdoors
- Entertainment terrace and BBQ area with sparkling vistas
- Two bedrooms include a master with ensuite and walk-in
- Recent upgrades include: timber flooring, automatic blind system, custom built-in cabinetry
- Sleek gourmet kitchen with island bench and gas fittings
- Newly fitted Zip Hydro tap (chilled and sparkling water filter system)
- Separate study nook, internal laundry and great storage
- Indoor & outdoor pools, gym, tennis and steam room

morton.com.au

View

As advertised or by appointment

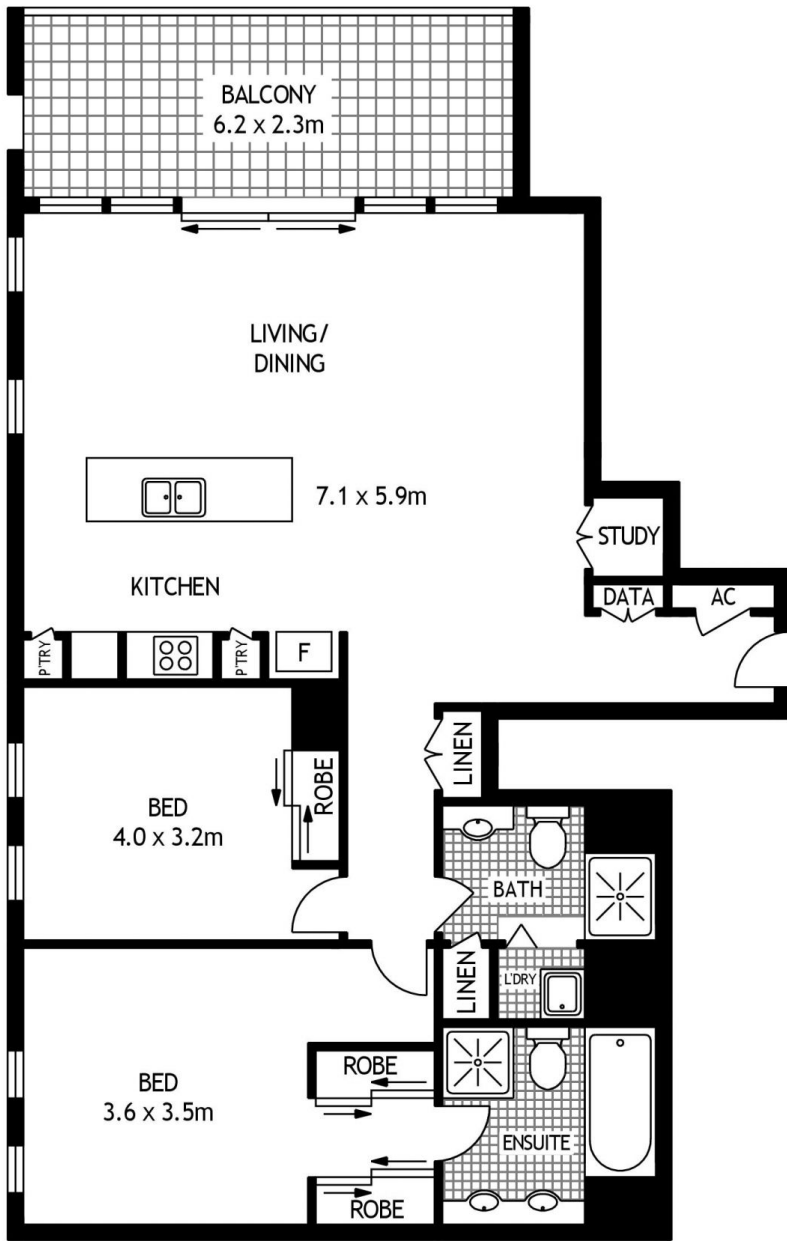
Agents

Ian Qiu

0447 696 425
 ian@morton.com.au

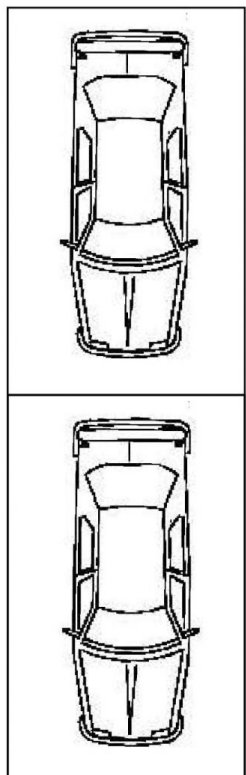
Naomie Texier

0439 247 710
 naomie@morton.com.au



LEVEL EIGHTEEN

STORAGE CAGE



BASEMENT LEVEL



18F/4 DISTILLERY DRIVE

PYRMONT

SCAPE Floor Planning Disclaimer: This floor plan is conceptual only. it is provided for illustrative purposes only and should not be relied upon. We make no guarantees to the correctness of this plan. All interested parties should make and rely on their own enquiries in determining the accuracy of the information contained in this floor plan.