



morton.

Pyrmont 705/2 Jones Bay Road

 1  1  1

Every detail of this exquisite apartment is pure perfection; from its light-filled interiors, high quality finishes and breathtaking harbour views over the city - this is a showcase of luxurious harbourside living. Size, style and design feature throughout this superb one-bedroom home that's been meticulously custom-made and finished with premium inclusions sourced from around the globe, all enhanced by a prime location in Pyrmont's sought-after Watermark Tower.

- A flowing layout featuring 63sqm indoor-outdoor living space
- Grandstand panoramas over the city skyline and Harbour Bridge
- An open plan layout with quality timber flooring by Havwoods

- Designer lighting by Est Lighting, tapware accessories by Parisi
- Natural and beautiful joinery finishes by New Age Veeners (NAV)
- A sumptuous bedroom featuring loop pile 100% wool carpet
- Entertainer's llve kitchen finished with beautiful Calacutta

View



As advertised or by appointment

Agents

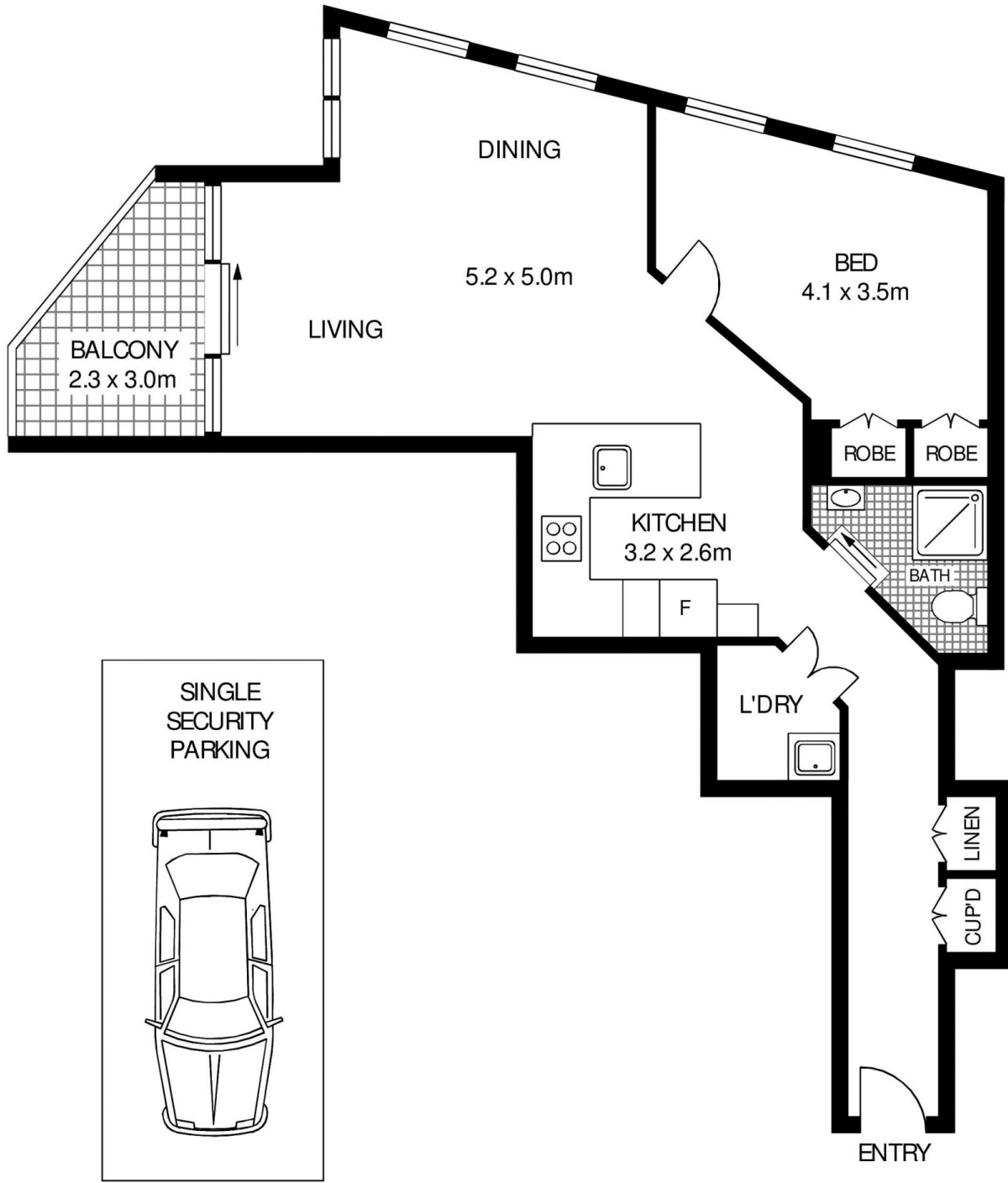
Ian Qiu

 0447 696 425
 ian@morton.com.au

Naomie Texier

 0439 247 710
 naomie@morton.com.au

morton.com.au



LEVEL 7



705/2 JONES BAY ROAD

PYRMONT

SCAPE Floor Planning Disclaimer: This floor plan is conceptual only. It is provided for illustrative purposes only and should not be relied upon. We make no guarantee as to the correctness of this plan. All interested parties should make and rely on their own enquiries in determining the accuracy of the information contained in this floor plan.