



morton.

Haymarket Level 9/303 Castlereagh Street



Set on the ninth floor, located within the resort style 'Regis Tower', this unique home is a perfect home for the size and the location.

- Impressive 95 sqm, with a winter garden plus a balcony
- Open plan dining & living area, great natural light / balcony access
- Spacious bedroom with built-in wardrobes and balcony access
- Modern European kitchen with gas and Stone bench-tops
- Ducted air-conditioning, ample storage and a full size internal laundry
- 16 sqm lock up garage on title with plenty of room for storage

- Resort style complex features heated pool, steam room, gym & squash courts
- Secure building with 24 hour security, concierge and intercom

Ultra- convenient with Central and Town Hall stations equally

morton.com.au

View

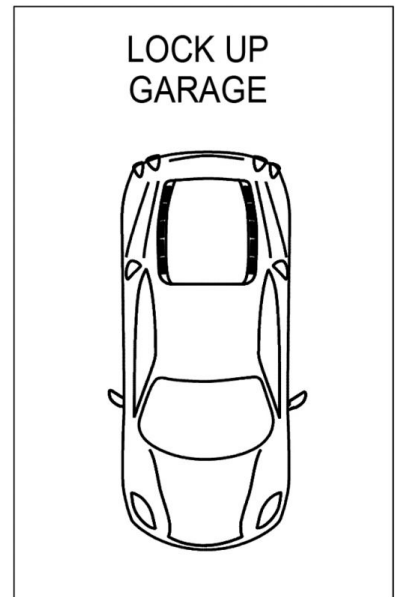
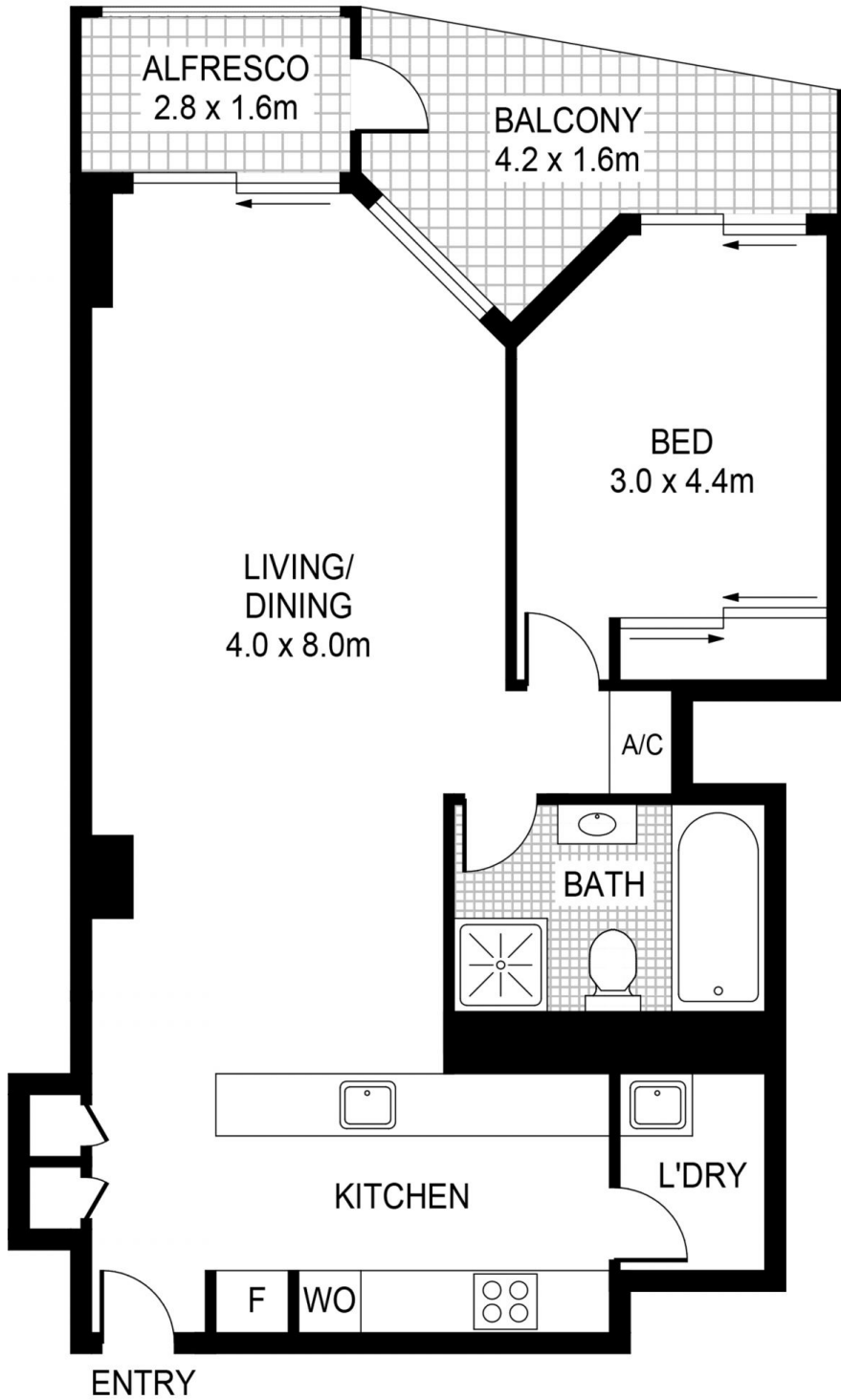
As advertised or by appointment

Agent

Christina Tsousta

📞 0408 577 427

✉️ christina.tsousta@morton.com.au



PLANS SHOWN ONLY INDICATIVE OF LAYOUT. DIMENSIONS ARE APPROXIMATE.



HAYMARKET 174/303 Castlereagh Street

morton.