



# morton.

**Crows Nest** 105/300 Pacific Highway

 2  2  1

The 'Imiza' is the lower north shore's architecturally inspired apartment building. This ultra chic boutique address incorporates leading edge design, superb inclusions and an ambience of space and luxury.

- Hybrid flooring throughout
- Light filled interiors with high ceilings feature a generous open plan design
- Private courtyard terrace with outdoor entertaining space
- Caesar stone finished kitchen with gas appliances and storage options
- Master bedroom with mirrored walk-through wardrobe to en-suite
- Generously sized second bedroom with mirrored built-ins and terrace access
- Full main bathroom with bath tub
- Separate laundry with dryer and storage
- Ducted air conditioning throughout and audio visual intercom
- Security car space plus storage cage and lift access
- Footsteps to cafes, fine eateries and city transport options

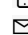
### View

As advertised or by appointment

### Agent

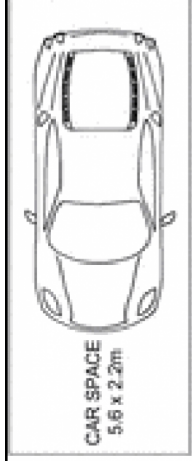
**Joseph Youll**

 0410 593 248

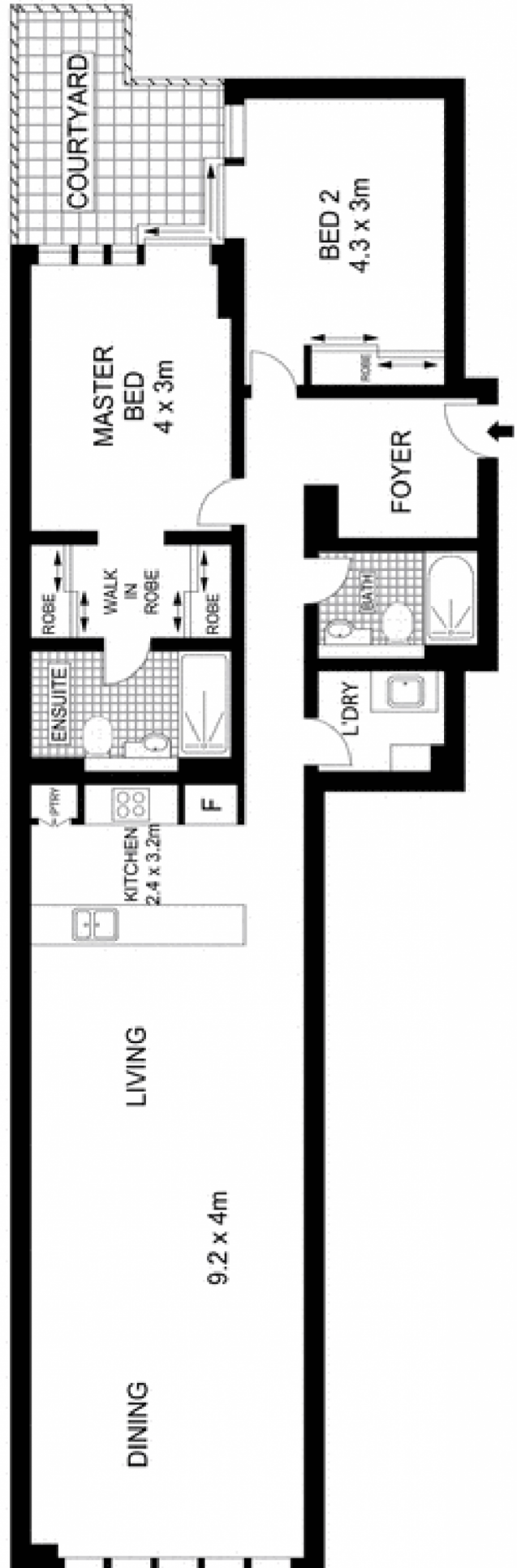
 joseph.youll@morton.com.au

[morton.com.au](http://morton.com.au)

**STORAGE**  
3.1 x 1.4m



**BASEMENT**



**LEVEL ONE**



Indicative only. Dimensions are approximate. All information contained herein is gathered from sources we believe to be reliable. However we cannot guarantee its accuracy and interested persons should rely on their own enquiries.





BASEMENT



LEVEL ONE



Scale in metres. Indicated only. Dimensions are approximate. All information contained herein is gathered from sources we believe to be reliable. However we cannot guarantee its accuracy and interested persons should rely on their own enquiries.

105/300 Pacific Highway, Crows Nest