



**morton.**

**Penrith** 303/81A Lord Sheffield Circuit

 2  2  1

In the heart of the immensely popular Thornton Estate and just a stone's throw

from Penrith's hub, this deluxe apartment offers the ultimate in easy apartment living with a prime location to match. It sits in an elevated position with district outlooks and features a spacious and versatile floorplan that's ideally configured to meet the needs of low maintenance lifestyle seekers.

- Generous layout with almost 100sqm of in/outdoor living area
- Crisp and bright open design and easycare timber flooring
- Private balcony that flows off the living area and bedroom
- Both bedrooms have walk-in robes and bathroom access
- Separate study nook, air-conditioned throughout, intercom entry
- Designer eat-in gas kitchen, plenty of storage, microwave, dishwasher
- Secure basement car space plus caged storage on title
- Residents access to community gardens and playground
- Pets considered upon application

**morton.com.au**

**View**

As advertised or by appointment

**Agent**

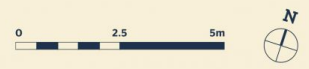
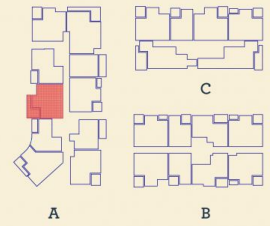
**Amy Torbarina**

 0438 977 172

 amy@morton.com.au

*Apartment*

2 BED- A 303



Internal	77 m <sup>2</sup>
External	7 m <sup>2</sup>
<b>Total</b>	<b>84 m<sup>2</sup></b>

DATE ISSUED 27/07/2015  
VERSION 02

Developed by St Hilliers FIRST POINT PROJECTS | Sales by LINK Home Land Direct [thorntoncentral.com.au](http://thorntoncentral.com.au)

**Disclaimer:** This floor plan has been prepared for marketing purposes only. All descriptions, dimensions, depictions and other details in this floor plan together, the "Information" may not be to scale. The vendor reserves the right to vary or amend the Information without notice. The Information may vary from the actual dimensions, layout and characteristics of the property as built. No third party has any authority whatsoever, either expressly or impliedly, to make or give any representation or warranty or to bind the vendor in connection with the information or the property.

**THORNTON**