



morton.

Riverwood 408/11A Washington Avenue

 2  2  1

In the heart of Washington Park's popular lifestyle hub and just footsteps to beautiful parklands and walkways, this designer two-bedroom plus study residence displays contemporary style and easy convenience. It sits in an elevated position with treetop outlooks and features a generous single-level floorplan that's ideally configured to meet the needs of those who enjoy low-maintenance living. It's also perfectly located with easy access to the CBD with train and bus services all within a short stroll from the front door.

- Full of light and style with a generous open interior layout
- A bright easterly aspect capturing lovely views over the trees
- Large-sized terrace that's perfect for relaxing or entertaining
- Two bright bedrooms both come fitted with spacious wardrobes
- Separate study, air-conditioning, intercom and great storage
- Quality gas kitchen, full bathroom, ensuite and internal laundry
- Lift access to a security car space in the basement garage
- An immaculate complex with gardens, seating and play areas



morton.com.au

View



As advertised or by appointment

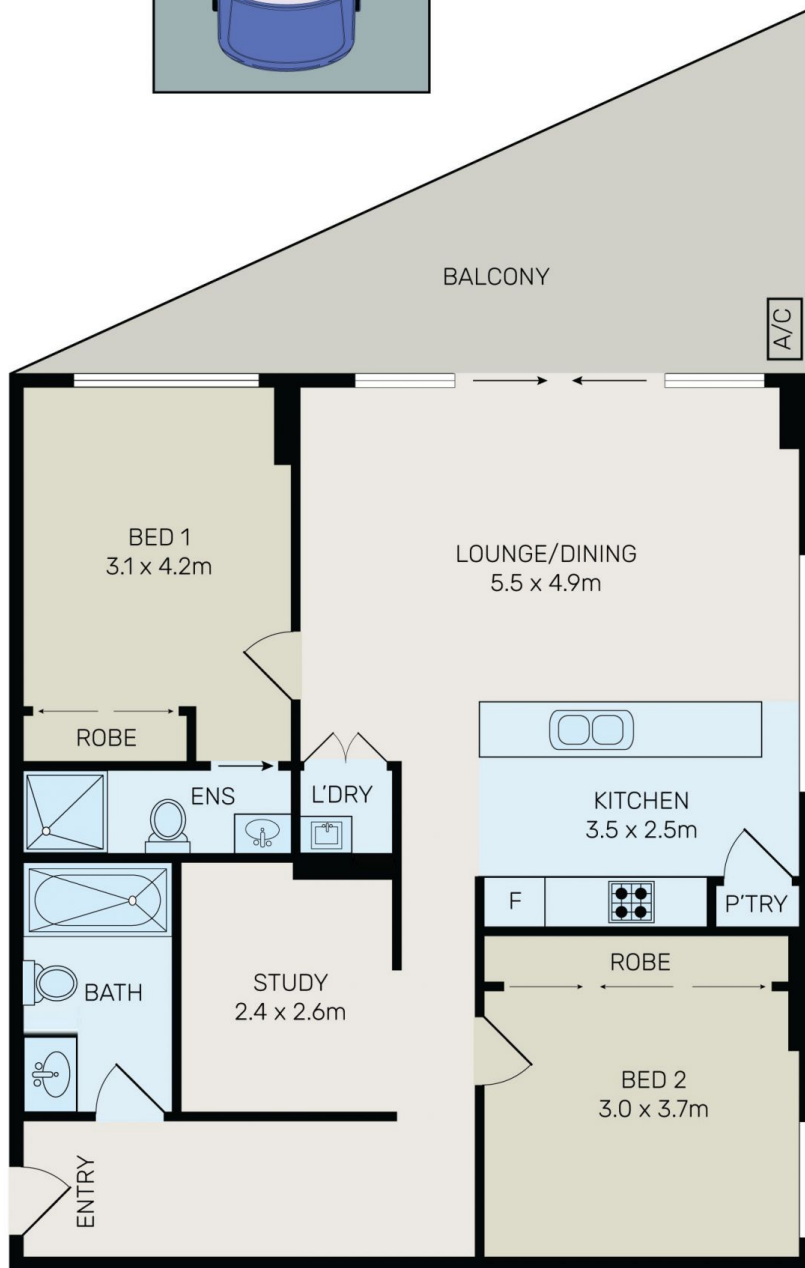
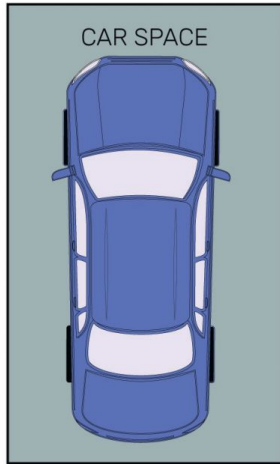
Agents

Vivian Zhang

 0447 964 200
 vivian.zhang@morton.com.au

Nada Fayad

 0408 376 995
 nadaf@morton.com.au



All information contained herein is gathered from all sources we believe to be reliable. However we cannot guarantee its accuracy and interested parties should rely on their own enquiries.



408/11A Washington Avenue, Riverwood