



# morton.

**Penrith** 402/81B Lord Sheffield Circuit

 2  2  1

Located in the hub of North Penrith, Thornton Central offers convenient apartment living in a master-planned community only metres from the Penrith rail hub, Westfield shopping centre and local parks.

Features Include:

- Level 4 Easterly aspect with large covered balcony
- Entertainers kitchen with stone benchtops, soft close cupboards
- Four burner gas stove top with stainless steel appliances, dishwasher
- LED lighting, internal laundry with dryer, reverse-cycle split-system air conditioning throughout
- Open living and dining with engineered timber flooring, dark colour scheme
- Wool-blend carpeted bedroom, mirrored built-in robes
- Audio intercom with security and lift access
- Secure basement car space, with a storage cage
- On-site building manager

**View**

As advertised or by appointment

**Agent**

**Amy Torbarina**

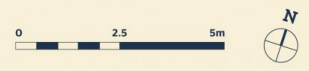
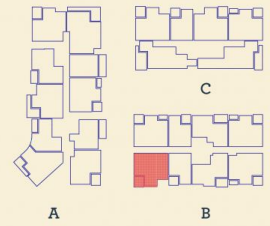
 0438 977 172

 amy@morton.com.au

[morton.com.au](https://www.morton.com.au)

*Apartment*

2 BED - B 402



Internal	77 m <sup>2</sup>
External	8 m <sup>2</sup>
<b>Total</b>	<b>85 m<sup>2</sup></b>

DATE ISSUED 27/07/2015  
VERSION 02

Developed by St Hilliers FIRST POINT PROJECTS | Sales by LINK Home Land Direct [thorntoncentral.com.au](http://thorntoncentral.com.au)

**Disclaimer:** This floor plan has been prepared for marketing purposes only. All descriptions, dimensions, depictions and other details in this floor plan (together, the "Information") may not be to scale. The vendor reserves the right to vary or amend the Information without notice. The Information may vary from the actual dimensions, layout and characteristics of the property as built. No third party has any authority whatsoever, either expressly or impliedly, to make or give any representation or warranty or to bind the vendor in connection with the information or the property.

**THORNTON**