



morton.

Macquarie Park 1711/13 Halifax Street

 2  1  1

Great opportunity to lease this luxury two-bedroom apartment located in Nexus building, NBH at Lachlan's Line. This iconic development perfectly positioned above a bustling town square at the heart of the new Lachlan's Line master plan.

- Generous open plan lounge with breath-taking views
- Quality designer gas kitchen with Miele appliances
- Good sized bedrooms with built-in robe, abundance of natural light
- Large enclosed entertainer's balcony off lounge and bedroom
- Sleek bathroom has floor to ceiling tiles, mirrored vanity cabinets
- One secure car space and storage cage, security building with lift access
- Video intercom, laundry with dryer, air-conditioning, NBN internet
- Lush landscaped gardens, pool & BBQ, onsite building manager
- 1 stop to Chatswood, 1 stop to Macquarie Centre, 2 stops to

View

As advertised or by appointment

Agent

Joseph Youll

 0410 593 248

 joseph.youll@morton.com.au

morton.com.au

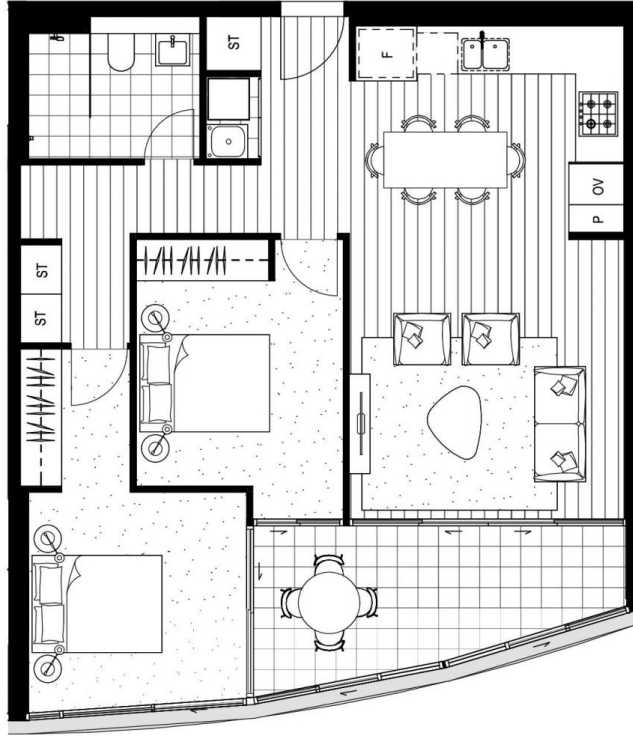


nbh
AT LACHLAN'S LINE

2B.10
Internal Area 72-76m²
External Area 9-11m²
Total Area 81-87m²

NEXUS

3.11, 5.11, 6.11, 7.11, 8.11, 9.11, 10.10, 11.11, 12.11, 13.11,
15.11, 16.11, 17.11, 18.10, 19.10



NBHSYDNEY.COM 1800 388 788

REV'D_01.06.18

Refer to General Arrangement Plans for specific unit locations, orientation and corner. Note that all graphics including balconies, glazing units, door units and the like should be taken to be indicative only. Window locations and operable window and door units are shown as indicative only and are subject to change. Ducts and air-conditioning units and their locations are shown as minimal and are subject to change. Floor plans are at an unspecified scale. All internal and external unit areas and sizes are indicated as approximate only and are subject to final strata survey. "Varies" possible window position for each individual unit only. Refer to the General Arrangement Plans for exact window and door positions for each individual unit. Please note that the floor plan was produced prior to construction. The information here is believed to be correct but is not guaranteed. Changes may be made during construction and dimensions, areas, fittings and specification are subject to change without notice in accordance with the provisions of the contract for sale. The furniture and furnishings depicted are not included with and sale and purchase must refer to a list of inclusions. The position of furniture and furnishings should not be taken to be indicative of final positions of power points, TV connection points and the like. Prospective purchasers must rely on their own enquiries. Bulkheads for services are not depicted.