



**morton.**

**Chippendale** 8 Park Lane



This luxury apartment exudes a perfect balance of aesthetics, practicality, warmth and clean minimalism. Featuring fresh modern interiors and a superb position, this Central Park apartment holds enormous appeal. Move straight in and enjoy a lifestyle of supreme convenience within footsteps to a variety of excellent eateries, transport and amenities.

- Living and dining flows easily to a large enclosed balcony
- Stylish contemporary kitchen with quality appliances
- Large bedroom, custom built-in wardrobe
- Ultra modern bathroom with internal laundry facilities
- 3sqm lock up storage cage, ducted air conditioning
- Building facilities include gym and pool
- Skyline views of Iconic heritage buildings
- Property can be furnished or unfurnished

**View**

As advertised or by appointment

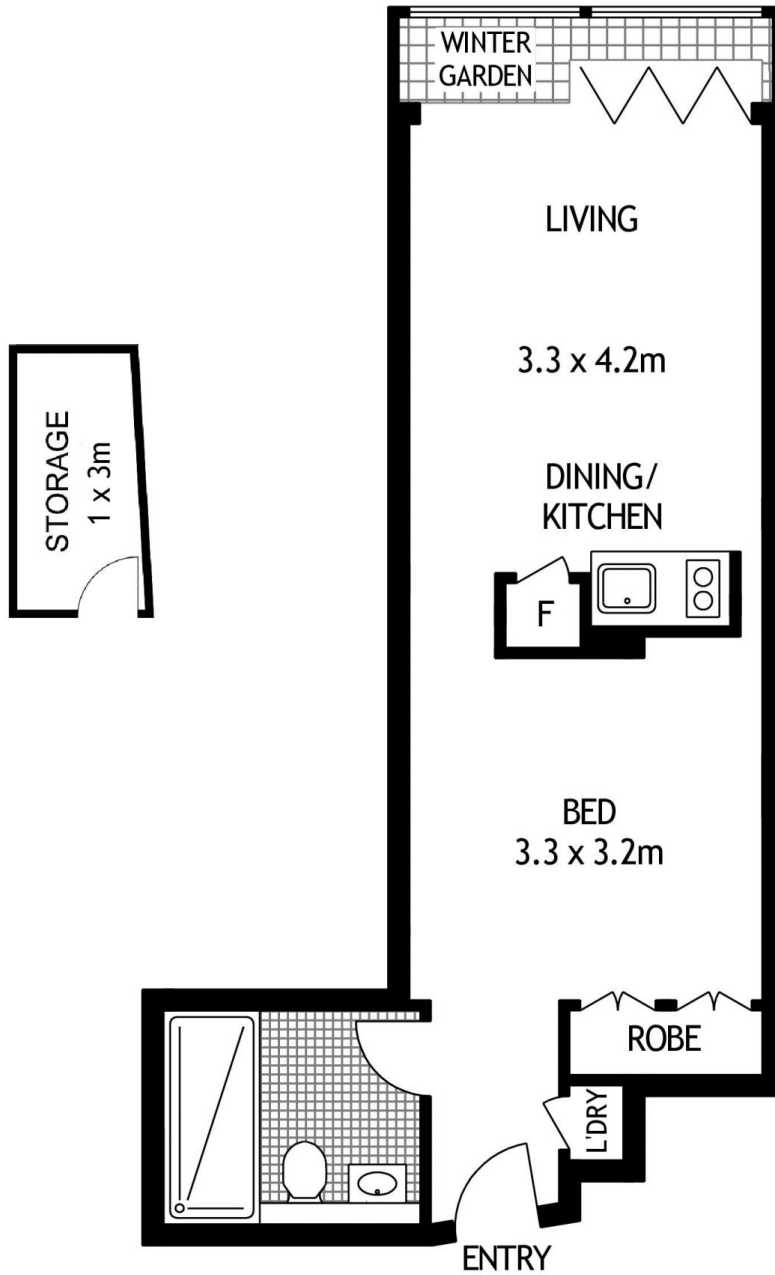
**Agent**

**Christina Tsousta**

📞 0408 577 427

✉ christina.tsousta@morton.com.au

**morton.com.au**



LEVEL FOURTEEN



1401/8 PARK LANE

CHIPPENDALE

SCAPE Floor Planing Disclaimer: This floor plan is conceptual only. it is provided for illustrative purposes only and should not be relied upon. We make no guarantees to the correctness of this plan. All interested parties should make and rely on their own enquiries in determining the accuracy of the information contained in this floor plan.