



morton.

Ryde 4128/10 Porter Street

 3  2  2

(Entrance on corner of Porter Street and Well Street - BLOCK D1)

A superb easy-living space that's smartly appointed for today's living, this modern three-bedroom apartment is part of a quality security building, just footsteps to the water's edge. It has been well-planned to complement a busy lifestyle and is ideal for buyers seeking a spacious, secure and low-maintenance living home with 110sqm of in/outdoor living space and an elevated 5th floor position that captures outlooks over the area.

- Generously proportioned interior with a bright open design
- Elevated south east aspect with good natural light and breezes
- Wide entertainment balcony that enjoys a suburban outlook
- Quality modern kitchen fitted with stainless-steel appliances
- Three bedrooms all have built ins, the master has an ensuite
- Two side-by-side car spaces, ducted air-conditioning, intercom

morton.com.au

View

As advertised or by appointment

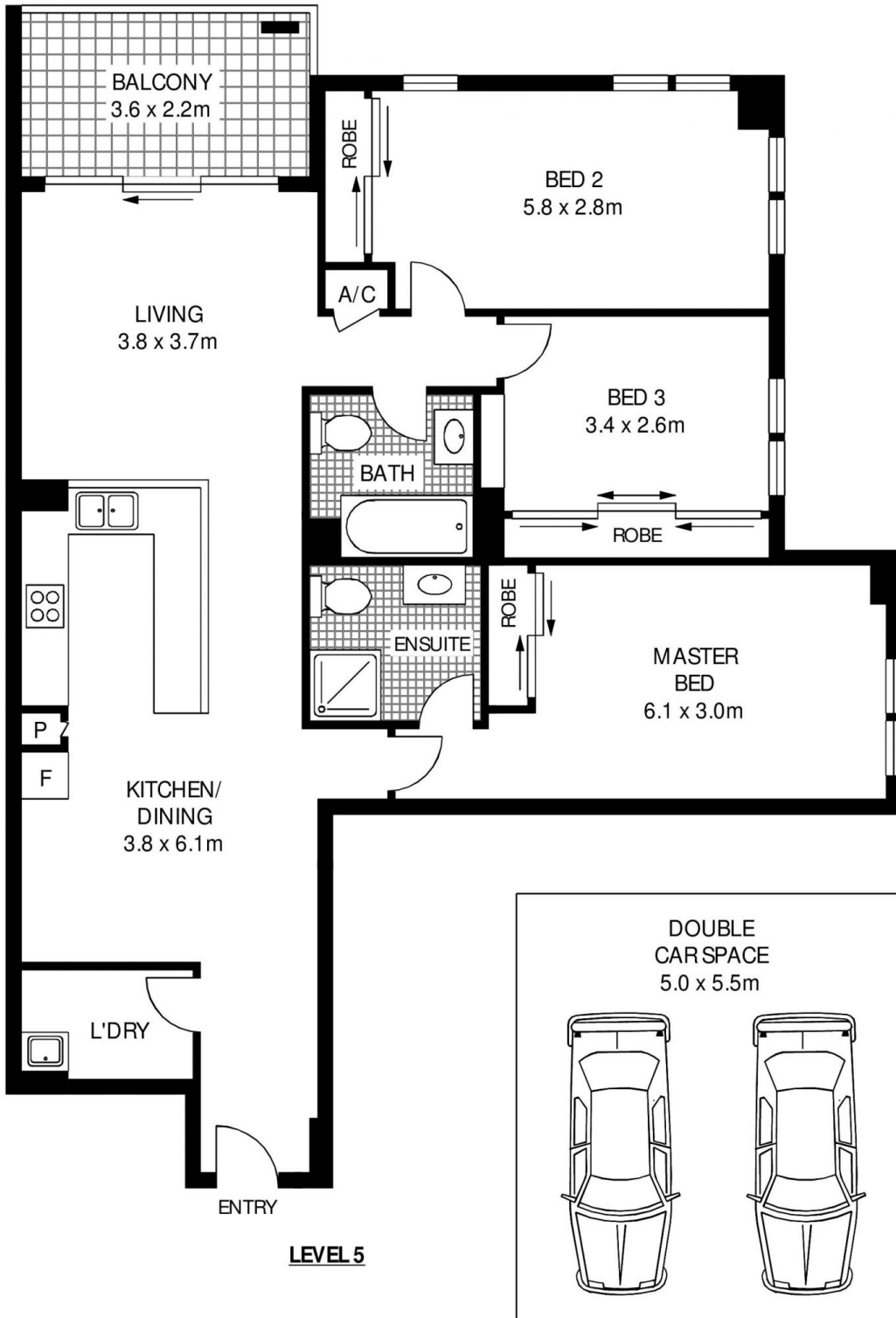
Agents

Ian Qiu

 0447 696 425
 ian@morton.com.au

Naomie Texier

 0439 247 710
 naomie@morton.com.au



LEVEL 5

LEVEL B1



4128/10 PORTER STREET

RYDE

SCAPE Floor Planning Disclaimer: This floor plan is conceptual only. It is provided for illustrative purposes only and should not be relied upon. We make no guarantee as to the correctness of this plan. All interested parties should make and rely on their own enquiries in determining the accuracy of the information contained in this floor plan.