



**morton.**

**Penrith** 704/101A Lord Sheffield Circuit

 2  2  1

This large two-bedroom unfurnished apartment is located in the hub of north Penrith. Thornton offers comfortable apartment living in a master planned community only metres from the Penrith rail hub, Westfield shopping centre and local parks.

#### Features


- 2nd from the top floor, northwest facing, plenty natural lights
- Large covered balcony with spectacular Blue Mountains Views
- Carpeted open living and dining area, LED lighting throughout
- Reverse cycle air conditioning, block-out roller blinds throughout
- Eat-in kitchen with stone bench-tops, soft close cupboards
- Gas stove top with stainless steel appliances
- Wool-blend carpeted bedroom with mirrored built-in robes
- Master with walk-in robe and large quality en-suite
- NBN ready, MATV/PayTV points in the living & bedroom
- Quality bathroom with mirrored vanity cabinet

#### View

As advertised or by appointment

#### Agent

**Anthony Fleming**

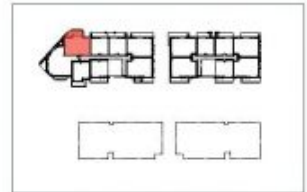
 0437 929 484

 [anthonyf@morton.com.au](mailto:anthonyf@morton.com.au)

**morton.com.au**



# Apartment A704 2 Bed



Internal	76 m <sup>2</sup>	N
External	14 m <sup>2</sup>	⊗
Total	90 m <sup>2</sup>	

0 2.5 5m

**THORNTON**  
ThorntonCentral.com.au

Disclaimer: This floor plan has been prepared for marketing purposes only. All descriptions, dimensions, depictions and other details in this floor plan (together the "Information") may not be to scale. The vendor reserves the right to vary or amend the Information without notice. The Information may vary from the actual dimensions, layout and characteristics of the property as built. No third party has any authority whatsoever, either as agent or in any way, to make or give any representation or warranty or to bind the vendor in connection with the information of the property.  
Dedicated: 23/02/2014. Version: 01