



morton.

Pyrmont 1601/21 Cadigal Avenue

 3  2  2

Entirely in a class of its own for size, privacy and panoramic Sydney views, this spectacular penthouse combines flowing interiors and an expansive outdoor area for an extraordinary entertainers' lifestyle. The stunning sky-residence provides 244sqm of in/outdoor living area and a design that takes full advantage of natural light and the superb outlook, with a house-sized single level layout that's perfect for easy maintenance harbourside living.

- A prime north-east corner position and one of only two per floor
- Incredible views stretch over the city, Harbour Bridge and surrounds
- Light and airy open design that integrates easily with the outdoors
- An expansive wraparound terrace with grandstand harbour views
- Three bedrooms, the master has direct access to the balcony
- Freshly presented with new paint and carpeting throughout

View

As advertised or by appointment

Agents

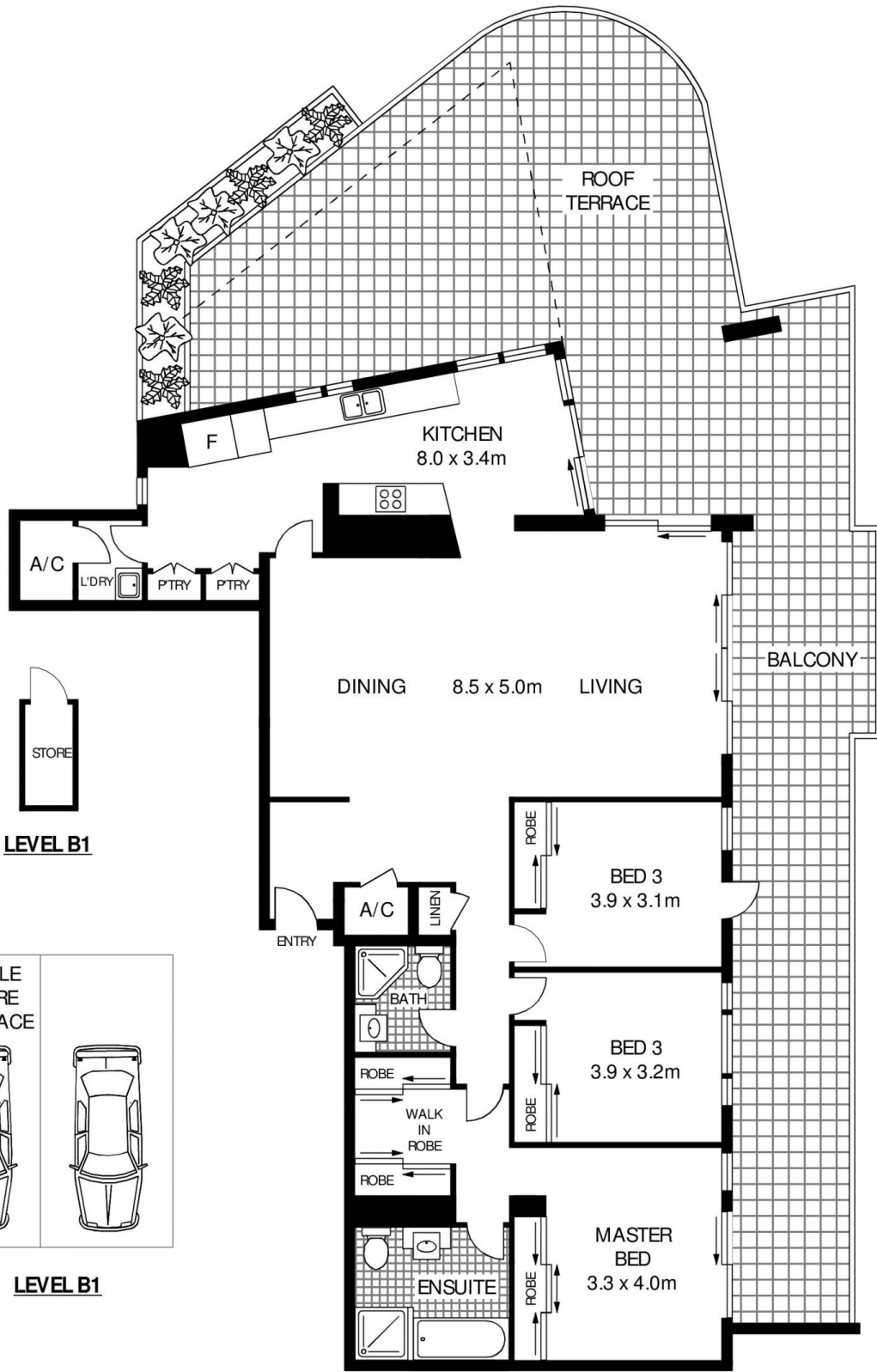
Ian Qiu

 0447 696 425
 ian@morton.com.au

Naomie Texier

 0439 247 710
 naomie@morton.com.au

morton.com.au



LEVEL B1

LEVEL B1

LEVEL 16



1601/21 CADIGAL AVENUE

PYRMONT

SCAPE Floor Planning Disclaimer: This floor plan is conceptual only. It is provided for illustrative purposes only and should not be relied upon. We make no guarantee as to the correctness of this plan. All interested parties should make and rely on their own enquiries in determining the accuracy of the information contained in this floor plan.