



morton.

Wentworth Point 222/23 Hill Road

 1  1  1

The Waterfront is located moments to Sydney Olympic Park main venues, train station, Bicentennial Park and Millennium Parklands. Located in Paros, this is your opportunity to move into this one bedroom apartment only a short stroll from The Promenade and The Piazza.

- Located on level two overlooking the courtyard
- Partly furnished apartment
- Combined living and dining rooms
- Reverse cycle air conditioning
- Open kitchen with stainless steel appliances
- Gas cooking and lots of cupboard space
- Great size bedroom with walk-in wardrobes
- Laundry room and clothes dryer
- Secure undercover car space

View

As advertised or by appointment

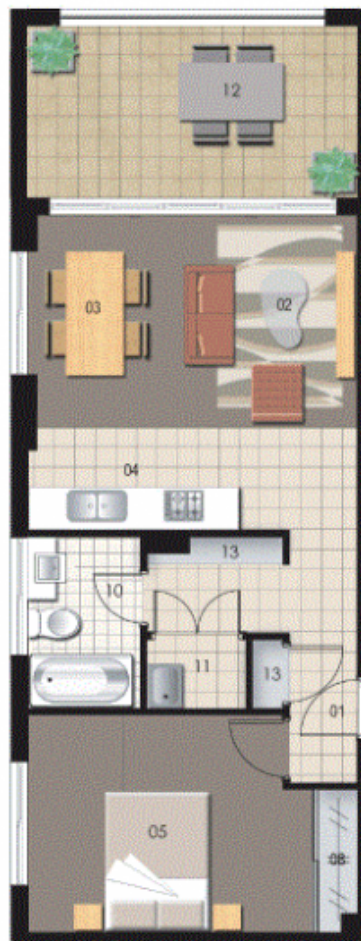
Agent

Nevena Petrovic

 0428 835 910

 nevena@morton.com.au

morton.com.au



ENTRY	01
LIVING	02
DINING	03
KITCHEN	04
BEDROOM 1	05
BEDROOM 2	06
BEDROOM 3	07

WARDROBE	08
ENSUITE	09
BATHROOM	10
LAUNDRY	11
BALCONY	12
STORAGE	13



Unit 222

Lot Number	17
Type	1 Bedroom
Unit Area	51 sqm
Balcony	12 sqm
Total	63 sqm