



# morton.

**Woolloomooloo** 133/6 Cowper Wharf Roadway

 1  1  1

Occupying a coveted absolute waterfront position and designed for seamless indoor/outdoor entertaining, this exceptional residence optimizes effortless contemporary living. Flooded with morning sunshine, the views flow across the sparkling harbour waters to Garden Island and historic Potts Point.



- Fully Furnished
- Large private waterfront deck is ideal for entertaining
- Inviting master bedroom, built-ins, ensuite access
- Gourmet gas kitchen boasts CaesarStone benches
- Ducted air conditioning, guest w/c, internal laundry
- Well presented for the low maintenance lifestyle

### View



As advertised or by appointment

### Agents

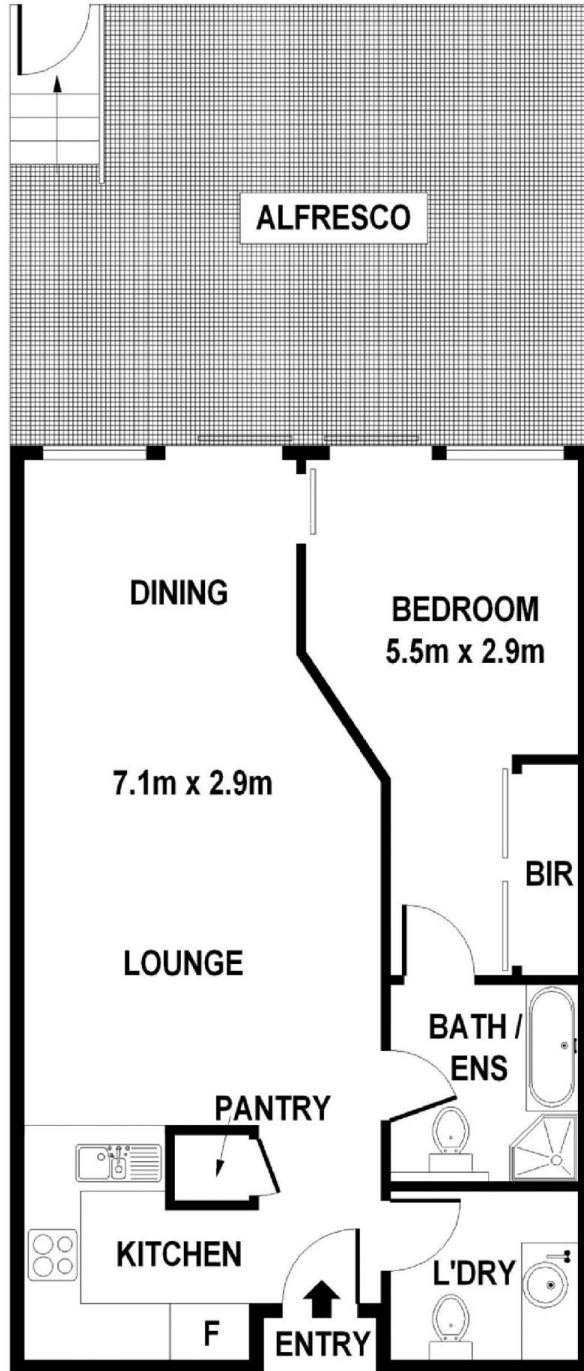
#### Reza Nabavi

 0419 283 588  
 reza.nabavi@morton.com.au

#### Emma Ryan

 0409 325 440  
 emma.ryan@morton.com.au

[morton.com.au](http://morton.com.au)



## 133/6 Cowper Wharf Roadway, Woolloomooloo

DISCLAIMER  
DIMENSIONS ARE APPROXIMATE AND SHOULD ONLY BE USED AS A GUIDE.  
THEY ARE NOT TO SCALE AND NO LIABILITY WILL BE ACCEPTED.