

morton.

Leichhardt 14/139 Marion Street

 2  1  1

Located only a leisurely walk from the buzz of Leichhardt's Norton Street, an address for those who love to live a relaxed cosmopolitan lifestyle is this unique apartment with a unique 69sqm ensuring peaceful area and district views with an uplifting sense of space, light and privacy.

- Light filled open plan layout with natural light
- Generously proportioned lounge and dining area with timber floors
- Modern chefs kitchen with quality stainless steel appliances
- Spacious entertainers balcony
- Contemporary bathroom
- Secure car space

View

As advertised or by appointment

Agent

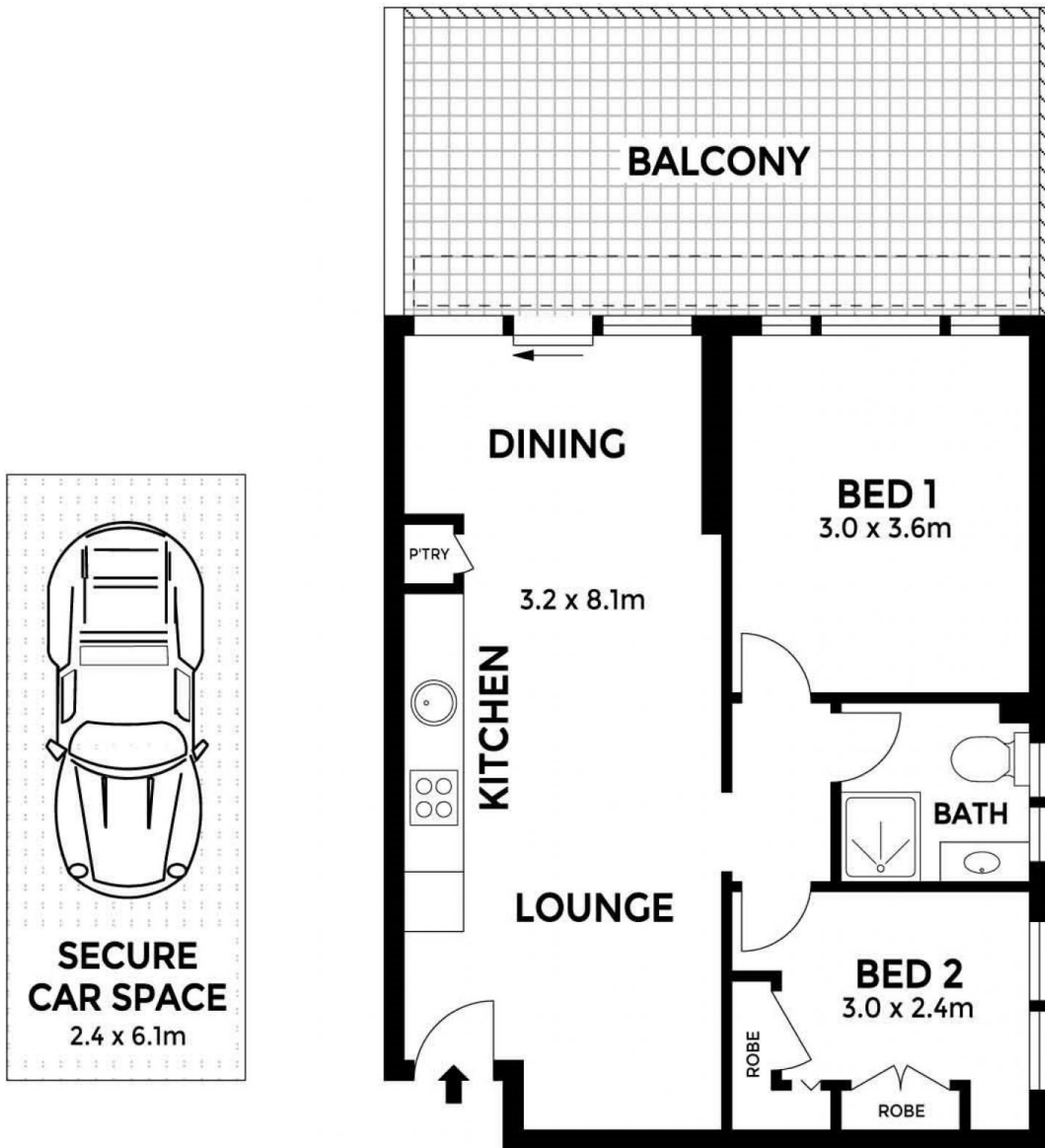
Nevena Petrovic

 0428 835 910

 nevena@morton.com.au

morton.com.au

14/139 Marion Street, Leichhardt



Top Floor

Internal	50 sqm
External	19 sqm
Car Space	15 sqm
Storage	05 sqm