



**morton.**

**Zetland** 9/102 Joynton Avenue

 2  2  1

Filled with natural light and benefiting from two separate aspects, this exceptional residence is the ultimate offering. Well configured and spacious with an emphasis on low maintenance livability and clean contemporary lines, this quality home is simply a short level stroll to Victoria Park amenities.

- Sleek kitchen with gas appliances
- Welcoming open plan lounge and dining with timber flooring
- Two separate balconies
- Double master complete with walk-in and an ensuite
- Study alcove, central garden courtyard, air conditioning
- Metres to shops, parks, cafes, supermarkets, restaurants
- Minutes to eastern beaches, UNSW, airport and the CBD

**View**

As advertised or by appointment

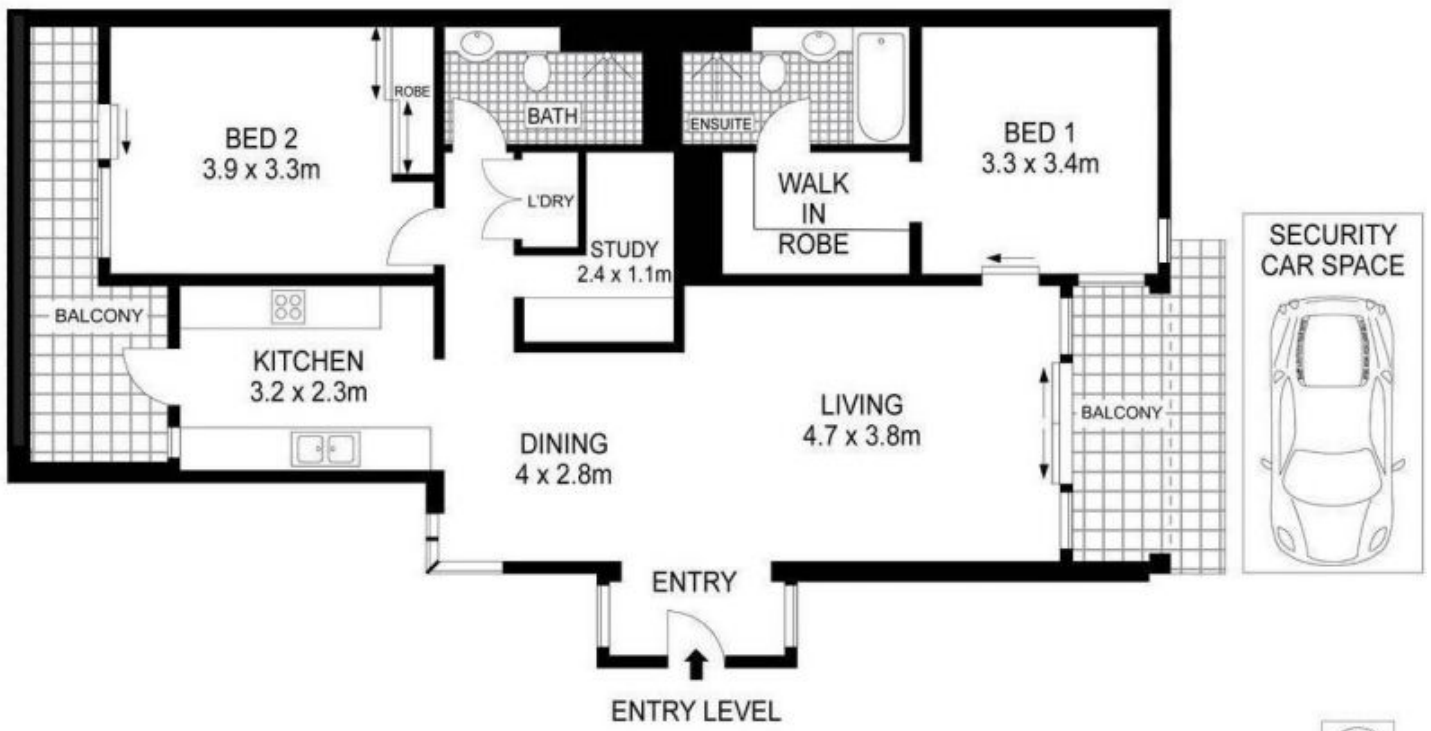
**Agent**

**Kristian Karaspyros**

 0436 477 102

 kristian.karaspyros@morton.com.au

**morton.com.au**



0 1 2 3 4 5



Plans shown are for presentation purposes only and are not part of any legal document or title. They are subject to errors, omissions, inaccuracies and should not be used as a sole and accurate reference. Interested parties should make their own inquiries using independent sources.