



# morton.

**Pyrmont** 10C/4 Distillery Drive

 2  2  1

A superb resort lifestyle comes with this immaculately maintained and well-proportioned apartment that's perched up on the 10th floor of the exclusive Sugardock building. Capturing a fantastic harbour view over Johnson's Bay and the surrounding area, it makes an instant impression with its clever modern design that takes full advantage of the space, natural light and elevated outlooks.

- A perfect north-east aspect floods the rooms with natural light
- Covered balcony leads off the living space and both bedrooms
- Spacious open plan design with light-filled living and dining areas
- Two double bedrooms positioned at opposite ends of the floorplan
- A well-appointed island kitchen featuring a large walk-in pantry
- Easy lift access to a security basement car space and storage cage

[morton.com.au](https://morton.com.au)

### View

As advertised or by appointment

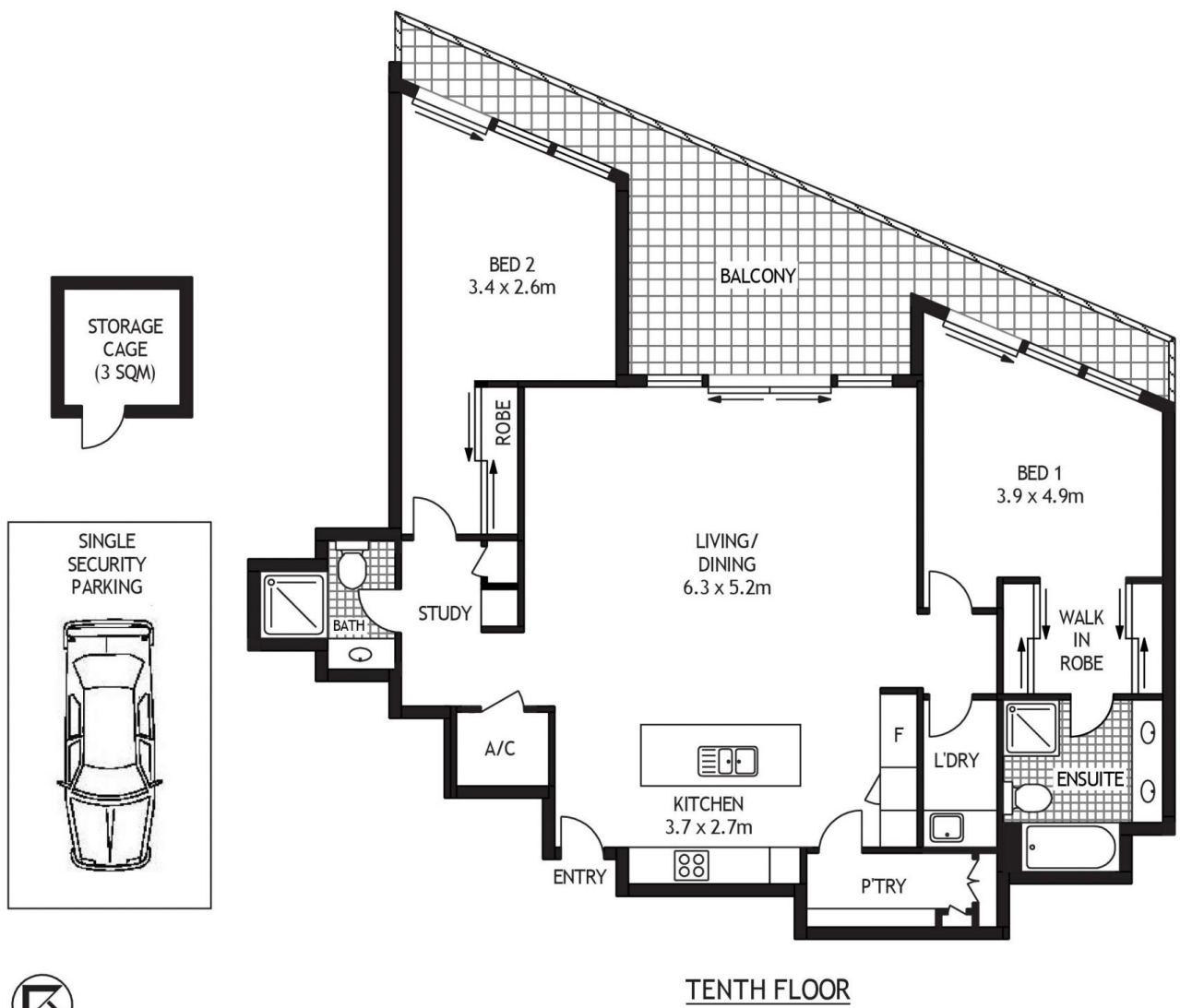
### Agents

#### Ian Qiu

 0447 696 425  
 [ian@morton.com.au](mailto:ian@morton.com.au)

#### Naomie Texier

 0439 247 710  
 [naomie@morton.com.au](mailto:naomie@morton.com.au)



TENTH FLOOR



10/4 DISTILLERY DRIVE

PYRMONT

SCAPE Floor Planing Disclaimer: This floor plan is conceptual only. It is provided for illustrative purposes only and should not be relied upon. We make no guarantees to the correctness of this plan. All interested parties should make and rely on their own enquiries in determining the accuracy of the information contained in this floor plan.