



**morton.**

**Penrith** 502/81A Lord Sheffield Circuit



Located in the hub of North Penrith, Thornton Central offers convenient apartment living in a master planned community only metres from the Penrith rail hub, Westfield shopping centre and local parks.

Features Include:

- Level 5 Southwest aspect with large covered balcony
- Carpeted king-sized bedroom with mirrored built-in robes
- Stylish kitchen with stone benchtops, soft close cupboards
- Four burner gas stove top with stainless steel appliances, dishwasher
- LED lighting, internal laundry with dryer
- Reverse-cycle split-system air conditioning
- Open living and dining with engineered timber flooring
- Audio intercom with security and lift access, NBN ready
- Secure basement car space, with a storage cage
- On-site building manager, common landscaped courtyard
- Pets considered on application, cats only

**View**

As advertised or by appointment

**Agent**

**Amy Torbarina**

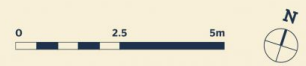
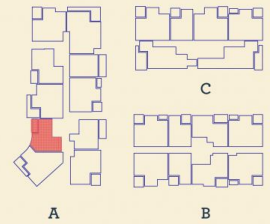
📞 0438 977 172

✉️ amy@morton.com.au

**morton.com.au**

## Apartment

### 1 BED- A 502



Internal 58 m<sup>2</sup>

External 7 m<sup>2</sup>

**Total 65 m<sup>2</sup>**

DATE ISSUED 27/07/2015  
VERSION 02

Developed by **St Hilliers** **FIRST POINT PROJECTS**

Sales by **LINK** **Home Land Direct**

[thorntoncentral.com.au](http://thorntoncentral.com.au)

**Disclaimer:** This floor plan has been prepared for marketing purposes only. All descriptions, dimensions, depictions and other details in this floor plan together, the "Information" may not be to scale. The vendor reserves the right to vary or amend the Information without notice. The Information may vary from the actual dimensions, layout and characteristics of the property as built. No third party has any authority whatsoever, either expressly or impliedly, to make or give any representation or warranty or to bind the vendor in connection with the information or the property.

# THORNTON