



# morton.

**Penrith** 303/10 Aviators Way

 2  2  1

Experience all the space, quality and lifestyle benefits of this brand-new executive apartment. Positioned within Thornton Estate's Pavilions East complex and capturing spectacular district panoramas, the beautifully appointed residence is ideally suited to those seeking a sleek designer living space in mint condition with low maintenance appeal.

- Large, open-plan living and dining room, 102sqm of living and bedroom space
- Kitchen island bench with gas cooktop, dishwasher and Omega appliances
- Split system air con in living and all bedrooms, blinds throughout
- Timber floorboards to living, LED lighting in kitchen and downlights
- Two carpeted bedrooms both with built in robes, ensuite to master
- Internal laundry, intercom entrance with 2 lifts to the building
- Built in 2018, 102 apartments in the pet-friendly building, NBN ready


[morton.com.au](http://morton.com.au)

### View

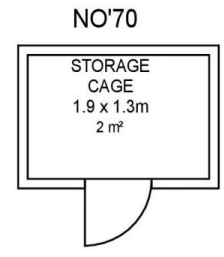
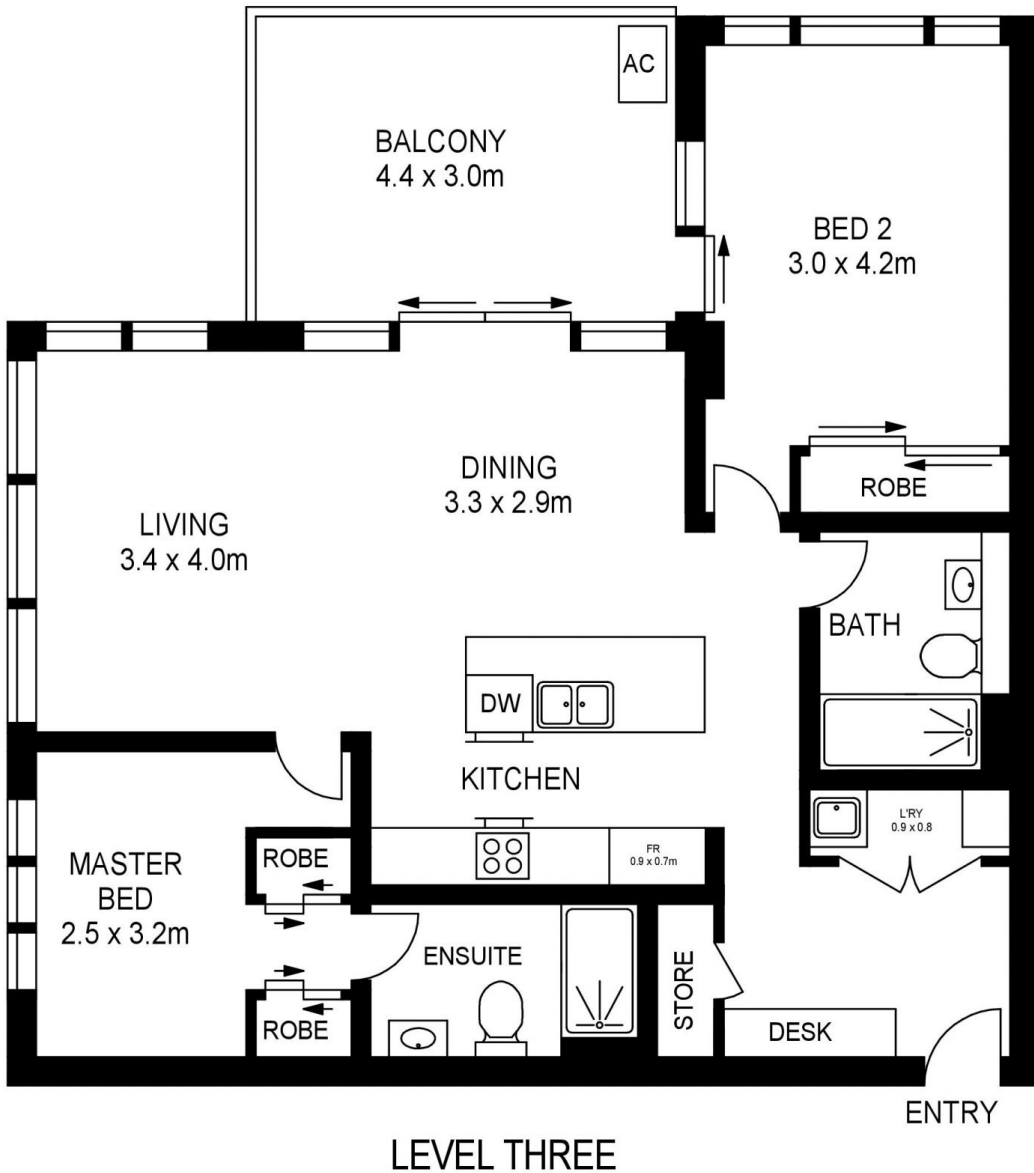
As advertised or by appointment

### Agent

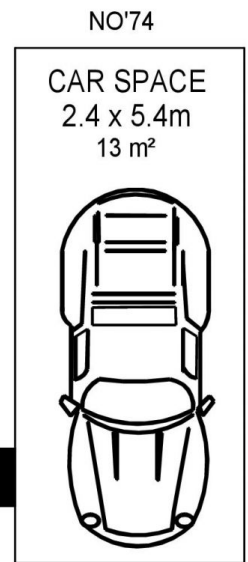
**David Lipman**

 0409 663 535

 david@morton.com.au



LEVEL B2



LEVEL B2

APPROX. INT. AREA : 89 m<sup>2</sup>  
APPROX. EXT. AREA : 13 m<sup>2</sup>  
TOTAL AREA INCLUDING CAR SPACE & STORAGE CAGE : 119 m<sup>2</sup>

### 303/10 AVIATOR WAY, PENRITH



[www.assetphotographers.com.au](http://www.assetphotographers.com.au)

Please note these measurements are approximate only. The plans is intended as a rough guide for illustrative purpose. It is not warranted or guaranteed to be correct nor it is part of the sale or rental contract