



**morton.**

**Penrith** 320/1-39 Lord Sheffield Circuit

 2  2  1

Located in the hub of North Penrith, Harts Landing offers contemporary urban living in a master planned vibrant community called Thornton Estate. Only metres from Penrith train station, Westfield shopping centre and local parks.

#### Features

- North-facing covered balcony
- Filled with ample natural light from the floor to ceiling windows
- Tiled open living and dining area, LED lighting throughout
- Reverse cycle air conditioning, block-out roller blinds throughout
- Eat-in kitchen with stone bench-tops, soft close drawers & cupboards
- Four burner stove top with stainless steel appliance
- Wool-blend carpeted bedrooms with mirrored built-in robes
- NBN ready, Data/TV/PayTV points in the living & bedroom
- Quality bathroom with mirrored vanity cabinet
- Internal laundry with dryer

#### View

As advertised or by appointment

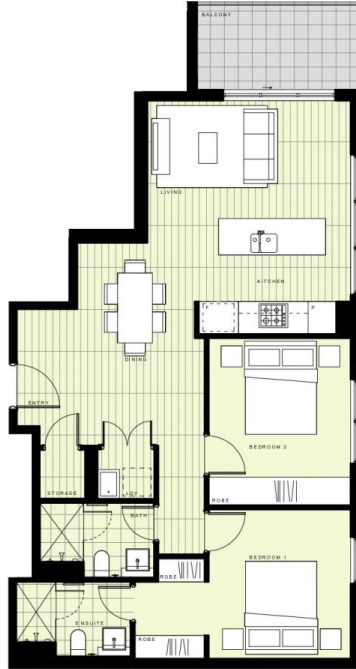
#### Agent

**Amy Torbarina**

 0438 977 172

 amy@morton.com.au

**morton.com.au**



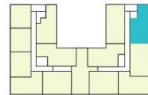
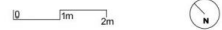
## BUILDING A

### LEVEL 3

#### APARTMENT A320 LOT 19

2 BEDROOM

INTERNAL AREA \_\_\_\_\_ 73m<sup>2</sup>  
EXTERNAL AREA \_\_\_\_\_ 6m<sup>2</sup>  
**TOTAL \_\_\_\_\_ 79m<sup>2</sup>**



Disclaimer: This floor plan has been prepared for marketing purposes only. All descriptions, dimensions, depictions and other details in this floor plan may not be to scale and may vary from the property as built. Your attention is drawn to the special conditions of the contract for sale of land. No third party has any authority to make or give any representation or warranty in relation to the property unless the representation or warranty is confirmed by the vendor and included in the contract for sale of land. Revised floor plans - 14.08.18

**CALL 1300 548 588**  
**HARTSLANDING.COM.AU**  
LORD SHEFFIELD CIRCUIT, PENRITH  
**LINK DISPLAY SUITE**  
22 GADIGAL AVENUE, ZETLAND

PROUDLY DEVELOPED BY | SALES BY

