



morton.

Wolli Creek B105/8 Gertrude Street

 2  2  1

Perfectly positioned on the parks edge, surrounded by waterways and lush green space, 'Cahill Gardens' is amidst all the natural splendor and captures panoramic views to the city and beyond. Residents will enjoy the best of Sydney's relaxed outdoor lifestyle, including the convenience of the village square with cafes and restaurants at their doorstep. Minutes walk to Wolli Creek train station and great park lands for recreational activities, this apartment is perfectly positioned for a great lifestyle.

Offering open-plan living space, thoughtfully designed kitchen and stylish bathrooms, the apartment is finished with top quality finishes including engineered Ceaserstone bench tops and glass splashbacks. The apartment also provides extensive floor to ceiling windows to maximize and welcome in natural light. Just off the living room you can access the north-facing courtyard with a generous recreation space.

- Two spacious bedrooms with built-in wardrobes
- Floorboards throughout the property and a large study

morton.com.au

View

As advertised or by appointment

Agent

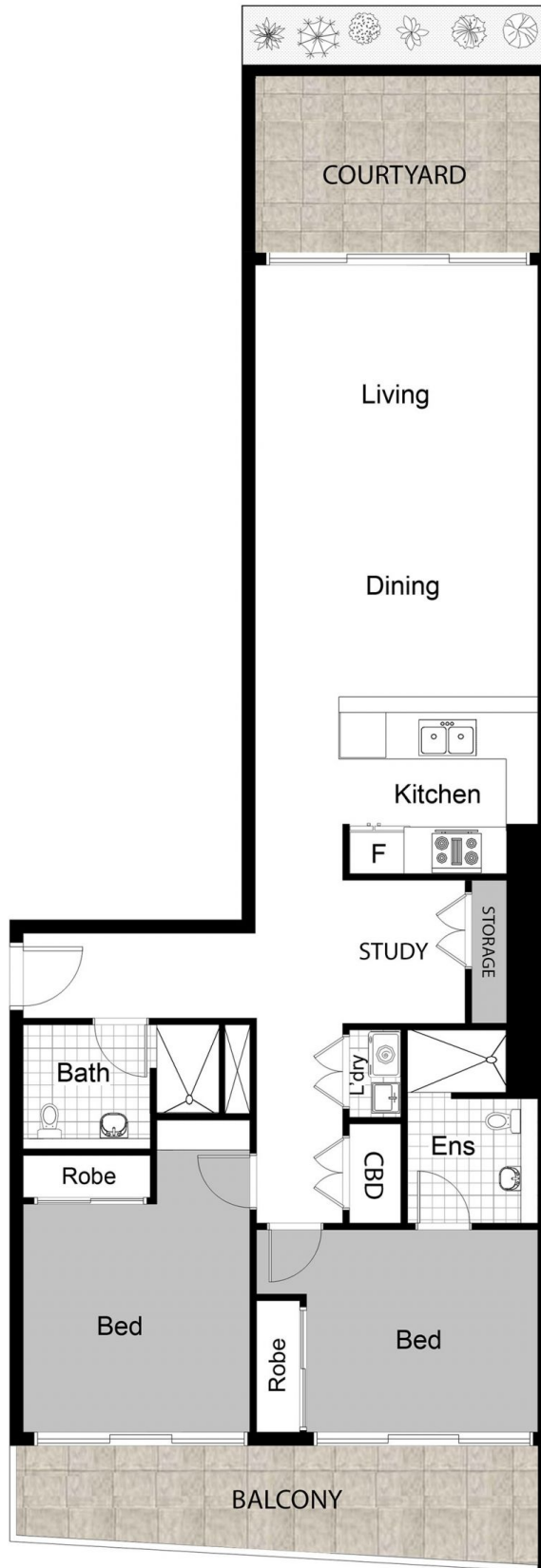
Kristian Karaspyros

 0436 477 102

 kristian.karaspyros@morton.com.au



INTERNAL AREA - 85sqm
EXTERNAL AREA - 30sqm
TOTAL AREA - 115sqm



DISCLAIMER: THIS IS FOR ILLUSTRATIVE PURPOSES ONLY.
ALL DIMENSIONS ARE APPROXIMATE AND IT DOES NOT
CONSTITUTE PART OF ANY LEGAL DOCUMENTS.

ADDRESS:

B105/6-8 GERTRUDE ST, WOLLI CREEK