



morton.

Sydney Level 13/281 Elizabeth Street

 2  2  1

Located in the sought after 'Regency Hyde Park' with breathtaking views over Hyde Park and Sydney Harbour glimpses.

- Unfurnished
- Spacious, combined living/dining area leads out onto one of two balconies overlooking Hyde Park
- Two spacious bedrooms, both with views over Hyde Park, main with second connecting park side balcony and ensuite bathroom with bath
- Modern granite kitchen with stainless steel gas appliances
- Built in wardrobes in both bedrooms
- Air conditioning, internal laundry
- One secure car space
- Security access and concierge
- Resort style facilities include indoor heated pool, spa, sauna and fully equipped gym

View

As advertised or by appointment

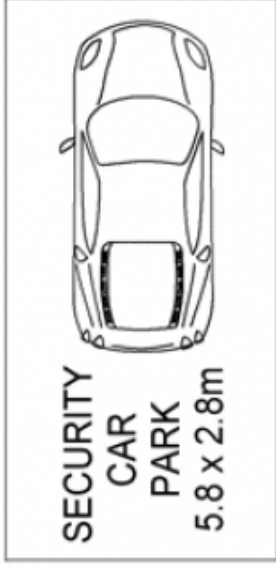
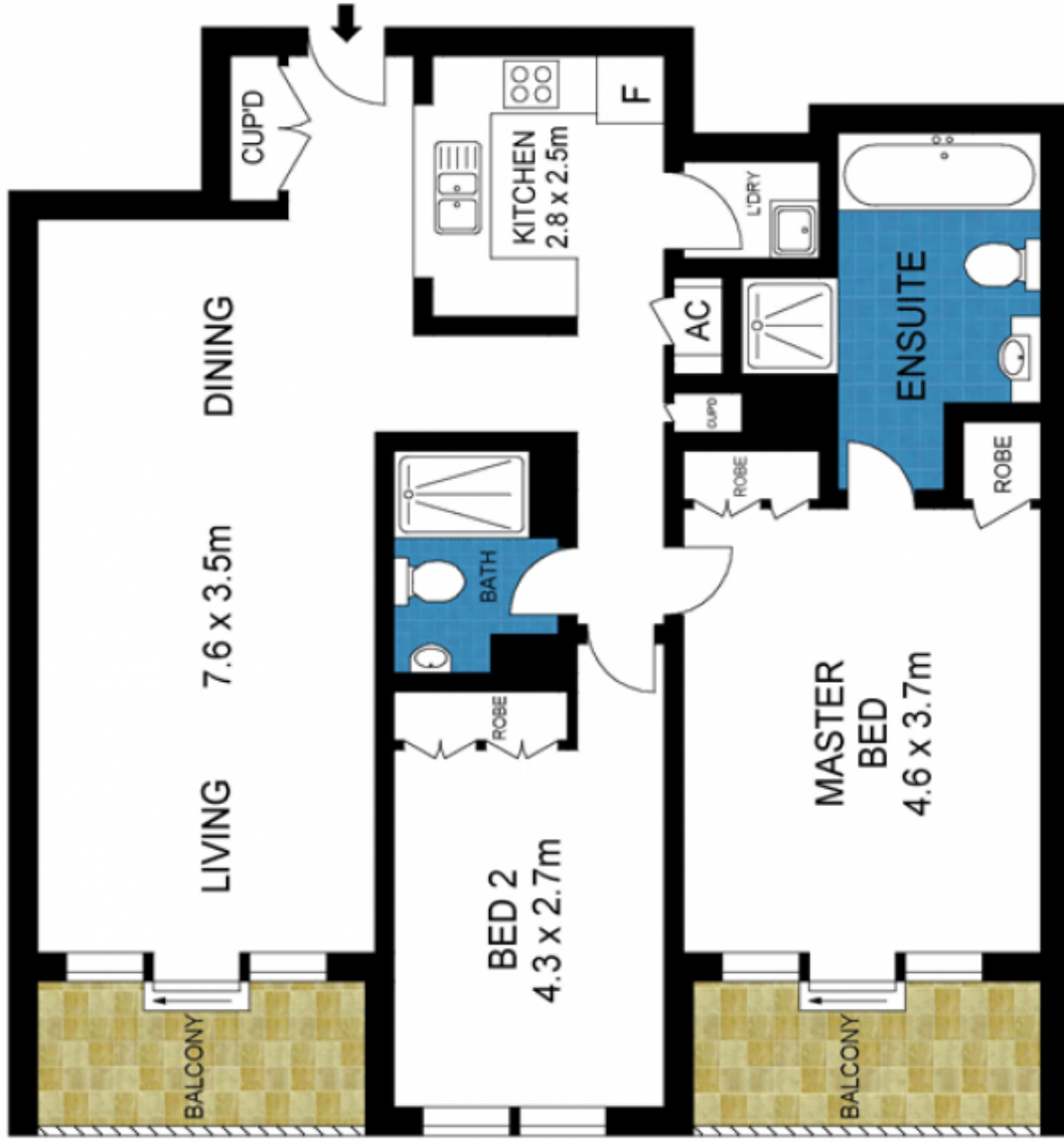
Agent

Christina Tsousta

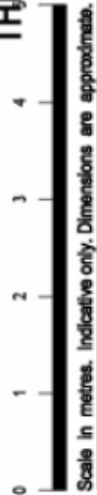
 0408 577 427

 christina.tsousta@morton.com.au

morton.com.au



THIRTEENTH FLOOR



INT : 94m²
EXT : 26m²



1302/281 Elizabeth Street, Sydney