



morton.

Pyrmont 111/152-164 Bulwara Road

 2  2  1

Contemporary interiors, over-sized proportions and a location packed with lifestyle advantages adds immediate appeal to this stylishly presented "Darlington" residence. Its flowing interiors enjoy leafy seclusion and provide an expansive single level layout, an easy low maintenance design and a sense of privacy with the convenience of being located close to the city's major attractions.

- Generous open living and dining area, timber floors
- Full length balcony ideal for outdoor entertaining
- Two double bedrooms both have access to the balcony
- Master contains ensuite and bathtub
- Reverse cycle air conditioning in the living and both bedrooms
- Security car space, full internal laundry
- Resort facilities include a heated pool, gym, spa and sauna
- Access to a shared rooftop terrace with city views
- Pets considered upon application

View


As advertised or by appointment

Agents

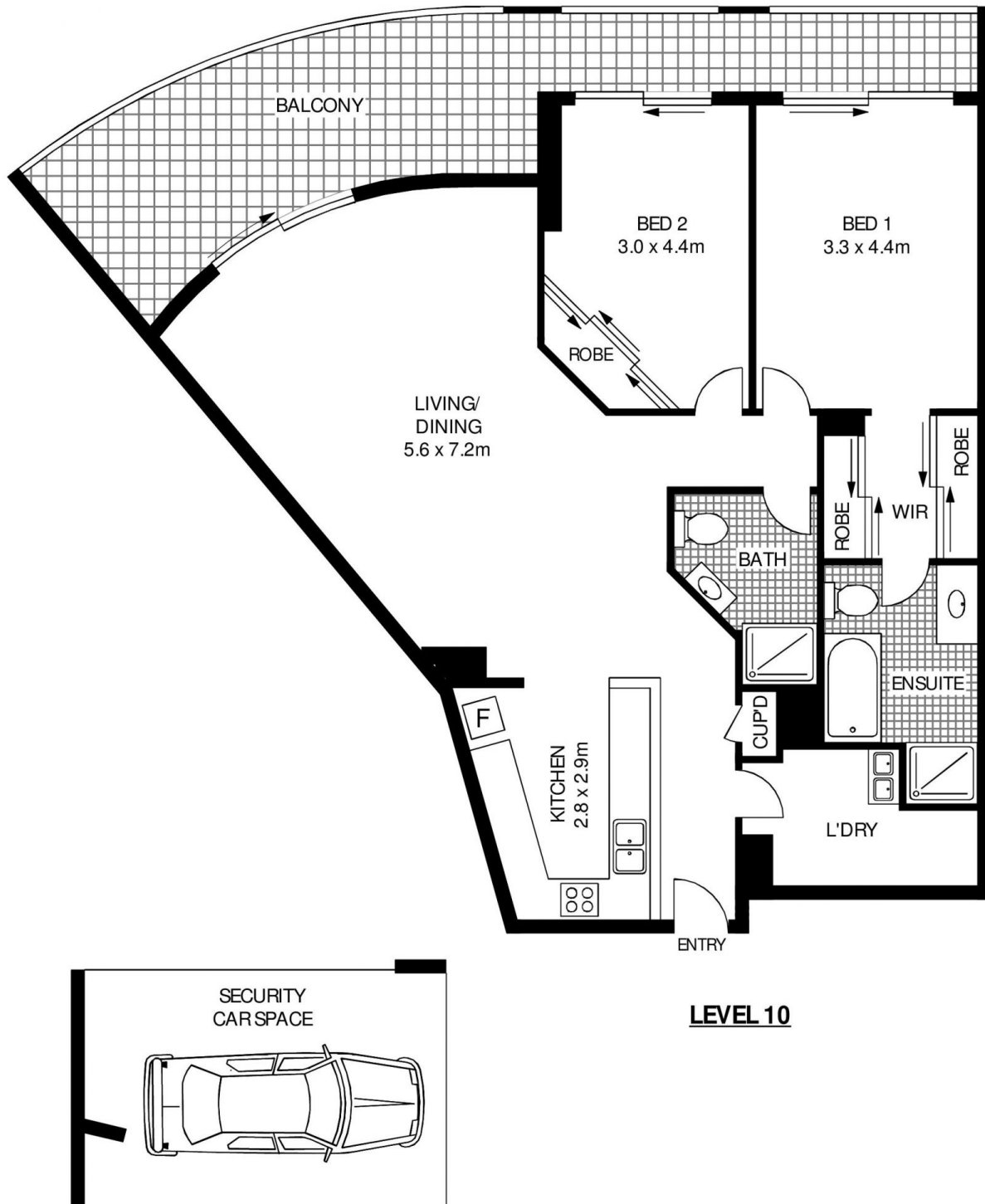
Ian Qiu

 0447 696 425
 ian@morton.com.au

Naomie Texier

 0439 247 710
 naomie@morton.com.au

morton.com.au



LEVEL 10



111/152 BULWARA ROAD

PYRMONT

SCAPE Floor Planning Disclaimer: This floor plan is conceptual only. It is provided for illustrative purposes only and should not be relied upon. We make no guarantee as to the correctness of this plan. All interested parties should make and rely on their own enquiries in determining the accuracy of the information contained in this floor plan.