



**morton.**

**Penrith** 921/1-39 Lord Sheffield Circuit

 2  2  1

Located in the hub of North Penrith, Harts Landing apartments are near new, unfurnished and offer contemporary urban living in a master planned vibrant community called Thornton Estate. Only metres from Penrith train station, Westfield shopping centre and local parks.

Features Include:

- Top floor, skylight in the living, south-west facing covered balcony
- Stylish kitchen with stone benchtops, soft close drawers & cupboards
- Four burner stove top with stainless steel appliances
- LED lighting throughout, reverse-cycle air conditioning
- Tiled open living and dining area, light colour scheme
- Wool-blend carpeted bedrooms, mirrored built-in robes
- NBN to the home, data/TV/PayTV points in living & bedroom
- Block-out roller blinds throughout, quality bathroom/ensuite
- Internal laundry with dryer

**View**

As advertised or by appointment

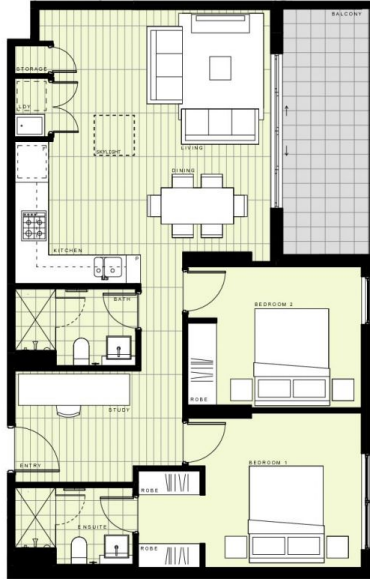
**Agent**

**Amy Torbarina**

 0438 977 172

 amy@morton.com.au

**morton.com.au**



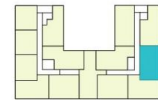
## BUILDING A

### LEVEL 9

#### APARTMENT A921 LOT 104

2 BEDROOM + STUDY

INTERNAL AREA 71m<sup>2</sup>  
EXTERNAL AREA 9m<sup>2</sup>  
**TOTAL 80m<sup>2</sup>**



Disclaimer: This floor plan has been prepared for marketing purposes only. All descriptions, dimensions, depictions and other details in this floor plan may not be to scale and may vary from the property as built. Your attention is drawn to the special conditions of the contract for sale of land. No third party has any authority to make or give any representation or warranty in relation to the property unless the representation or warranty is confirmed by the vendor and included in the contract for sale of land. Revised floor plans: 14/05/15

CALL 1300 548 588  
HARTSLANDING.COM.AU  
LORD SHEFFIELD CIRCUIT, PENRITH  
LINK DISPLAY SUITE  
22 CADIGAL AVENUE, ZETLAND

PROUDLY DEVELOPED BY SALES BY

