



morton.

Pyrmont 341/3 Darling Island Road

 3  3  3

Located on the northern tip of Darling Island's exclusive harbourside peninsula this enormous apartment occupying the entire northern level enjoys expansive uninterrupted harbour, city and bridge views from all living spaces. This unique residence sets the bench mark for space, light and the highest standard of design and finishes.

- Grand 90 sqm living with floor to ceiling glass with harbour backdrop
- Entertainers outdoor terraces are accessed around the entire apartment
- Three double bedrooms all with views, built-ins and marble en suites
- Designer kitchen inc Euro appliances, wine storage and coffee machine
- Central touch screen lighting, air con, floor heating & exterior screens
- Excellent security systems
- Secure under ground parking for two cars
- Resort style facilities including pool, gym, spa and sauna


morton.com.au

View

As advertised or by appointment

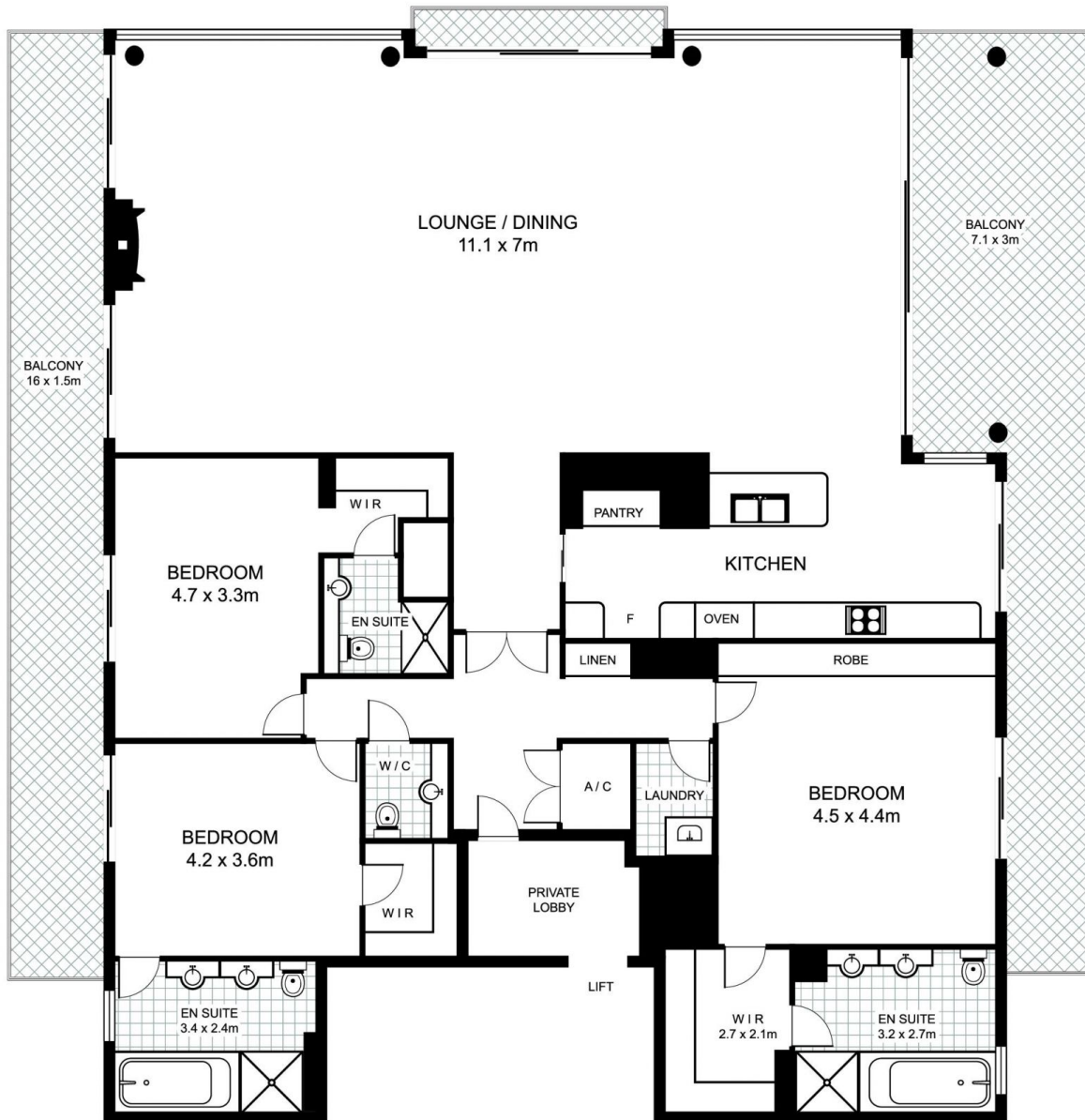
Agent

Christina Tsousta

 0408 577 427

 christina.tsousta@morton.com.au

3 Darling Island Road, PYRMONT



This floor plan is intended as a guide only. Layout dimensions are approximate only. No representations or warranties of any nature whatsoever are given or intended. Any person using this information should rely on their own enquiries



Plans by
surr@ndpix
com.au
1300 30 32 40