



morton.

Wentworth Point 122/3 Stromboli Strait

 1  1  1

The Waterfront is located moments to Sydney Olympic Park main venues, train station, Bicentennial Park and Millennium Parklands. Located in Napoli, this is your opportunity to move into this one bedroom apartment only a short stroll from The Promenade and The Piazza.

- Combined lounge dining area with direct courtyard access
- Fully fitted kitchen with stainless steel appliances
- Bathroom with bath tub
- Laundry room with dryer
- Split system air-conditioning unit
- Audio/visual security intercom
- Single parking with storage cage
- Bus and Ferry services are moments away

View

As advertised or by appointment

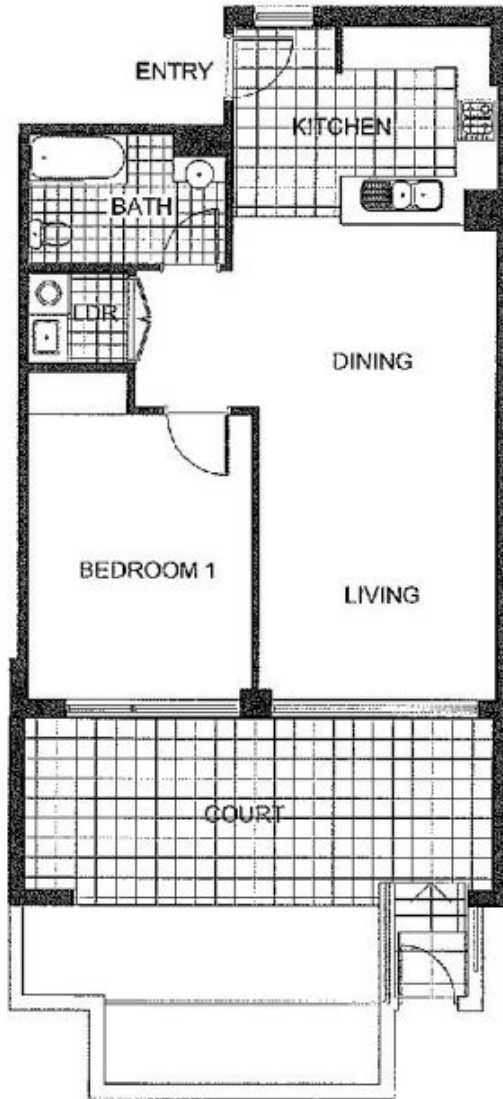
Agent

Nevena Petrovic

 0428 835 910

 nevena@morton.com.au

morton.com.au



"The information contained herein is intended as an introduction to the general content of the project and is subject to revision. Interested parties should rely on their own enquiries and the contract for sale. The developer reserves the right to vary from these descriptions as it deems necessary or as any relevant authority may require."



1 BEDROOM

APARTMENT 122

TYPE H

INTERNAL AREA 67 sqm

OUTDOOR AREA 30 sqm

TOTAL AREA 97 sqm

NAPOLI