



morton.

Wentworth Point 430/25 Bennelong Parkway

 1  1  1

The Waterfront is located moments to Sydney Olympic Park main venues, train station, Bicentennial Park and Millennium Parklands. Located in Positano, this is your opportunity to move into this one bedroom apartment only a short stroll from The Promenade and The Piazza.

- Located on level four with partial water views
- Generous floorplan 91sqm in total
- Two balconies perfect for entertaining
- Spacious open plan living and dining room
- Reverse cycle air conditioning
- Good size L-shaped kitchen with plenty of storage
- Gas cooking & quality stainless steel appliances
- Generous size bedroom with huge built-in wardrobes
- Separate laundry room and clothes dryer and washing machine
- Secure undercover car space
- Complex pool

View

As advertised or by appointment

Agent

Nevena Petrovic

 0428 835 910

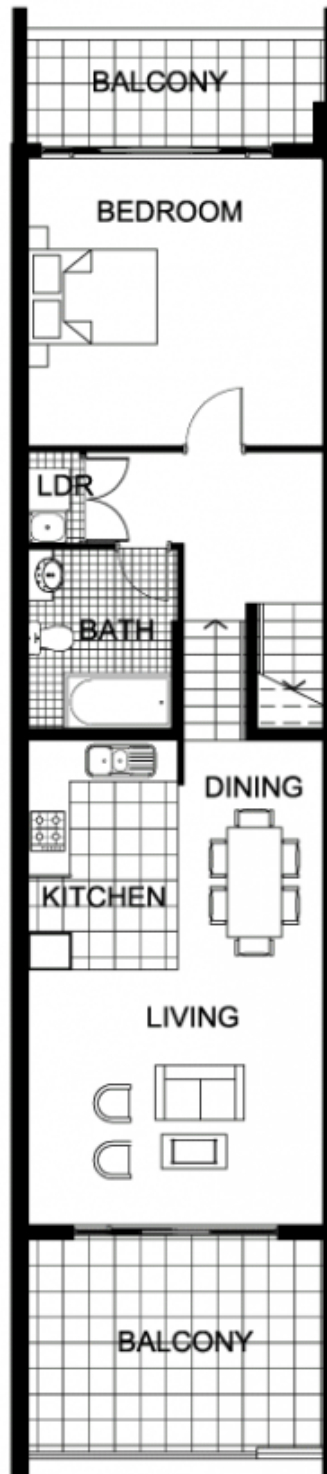
 nevena@morton.com.au

morton.com.au

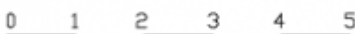


ENTRY

LEVEL 4.5



LEVEL 4



"The information contained herein is intended as an introduction to the general content of the project and is subject to variation. Interested parties should rely on their own enquiries and the contract for sale. The developer reserves the right to vary from these descriptions as it deems necessary or as any relevant authority may require."



1 BEDROOM

APARTMENT 430(Exist No.404)

INTERNAL AREA 71 sqm

OUTDOOR AREA 20 sqm

TOTAL AREA 91 sqm



LEVEL 4

POSITANO

