



morton.

Zetland 613/1 George Julius Avenue

 2  2  1

Holding Deposit Taken!!! Leased after first open.

This property is the definition of luxurious contemporary living in what is generally considered to be one of the east's most vibrant lifestyle precincts. This flawless sun-drenched apartment is the epitome of designer style. A premier opportunity for the couple or young family that has all the amenities of Victoria Park, East Village and Green Square station a stroll from the front door.



- Exclusive offering finished to the highest standard
- Two large double bedrooms
- Master bedroom appointed with ensuite and walk-in robe
- Impeccably appointed for low maintenance living
- Chic CaesarStone kitchen with stainless gas appliances
- Inviting open-plan lounge and dining space
- Entertainers balcony and separate study nook
- Internal laundry, ducted air conditioning
- Secure car space and storage cage

View

As advertised or by appointment

Agents

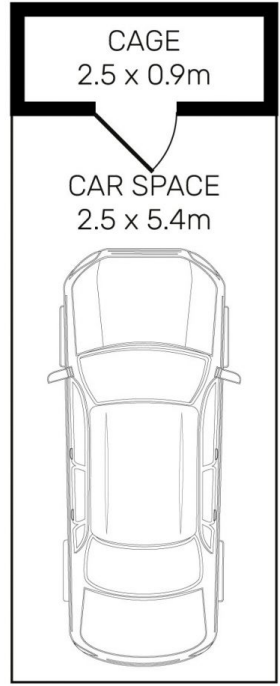
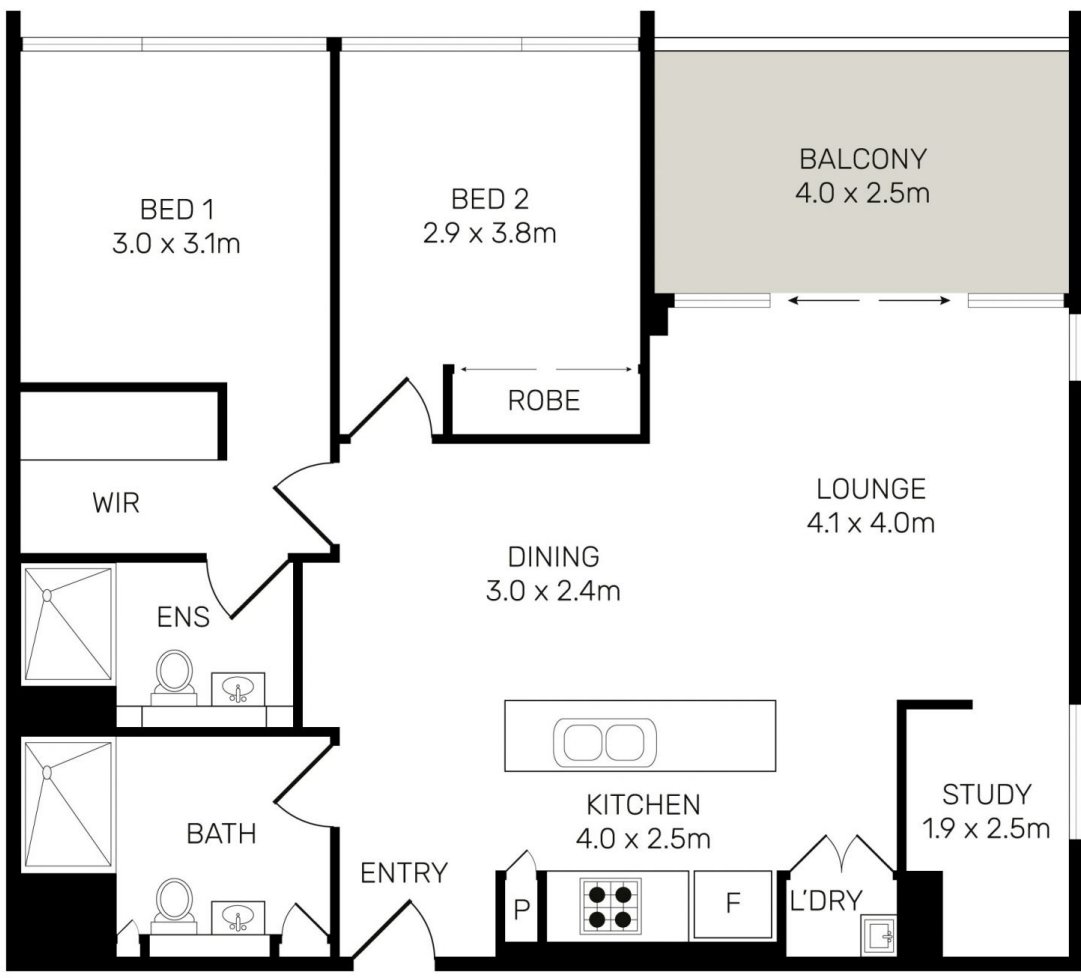
Sarah Fowell

 0437 492 129
 sarah@morton.com.au

Kristian Karaspyros

 0436 477 102
 kristian.karaspyros@morton.com.au

morton.com.au



All information contained herein is gathered from all sources we believe to be reliable. However we cannot guarantee its accuracy and interested parties should rely on their own enquiries.



613/1 George Julius Avenue, Zetland