



morton.

Wentworth Point 103/45 Hill Road

 2  2  1

If modern spaces, generous proportions and low maintenance convenience are important for your next property purchase, this superbly designed with high ceiling apartment is a must see. Peacefully positioned on the ground level within the quality Atlas building and providing spacious courtyard space, it offers a great opportunity to buy a freshly appointed home in the heart of Wentworth Point, and right next to the Millennium Parklands and Newington Nature Reserve.

- Oversized : Internal + Balcony: 122 sqm, Total: 137 sqm
- Elevated position that enjoys and expansive courtyard for entertainment
- Full of light and energy with a generous open interior layout
- Large-sized lounge with high ceiling makes the rooms feel bigger
- Two bright bedrooms plus a study nook
- Quality & modern kitchen with breakfast bar and gas cooking
- Security car space plus lock-up storage and lift access
- Short walk to Marina Square shopping centre, transport and public school



[morton.com.au](https://www.morton.com.au)

View



As advertised or by appointment

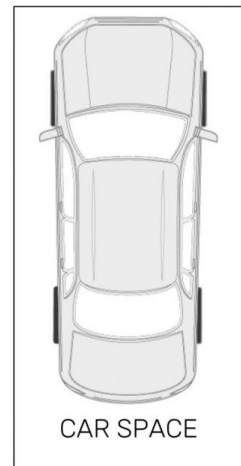
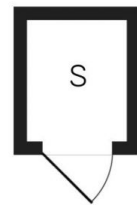
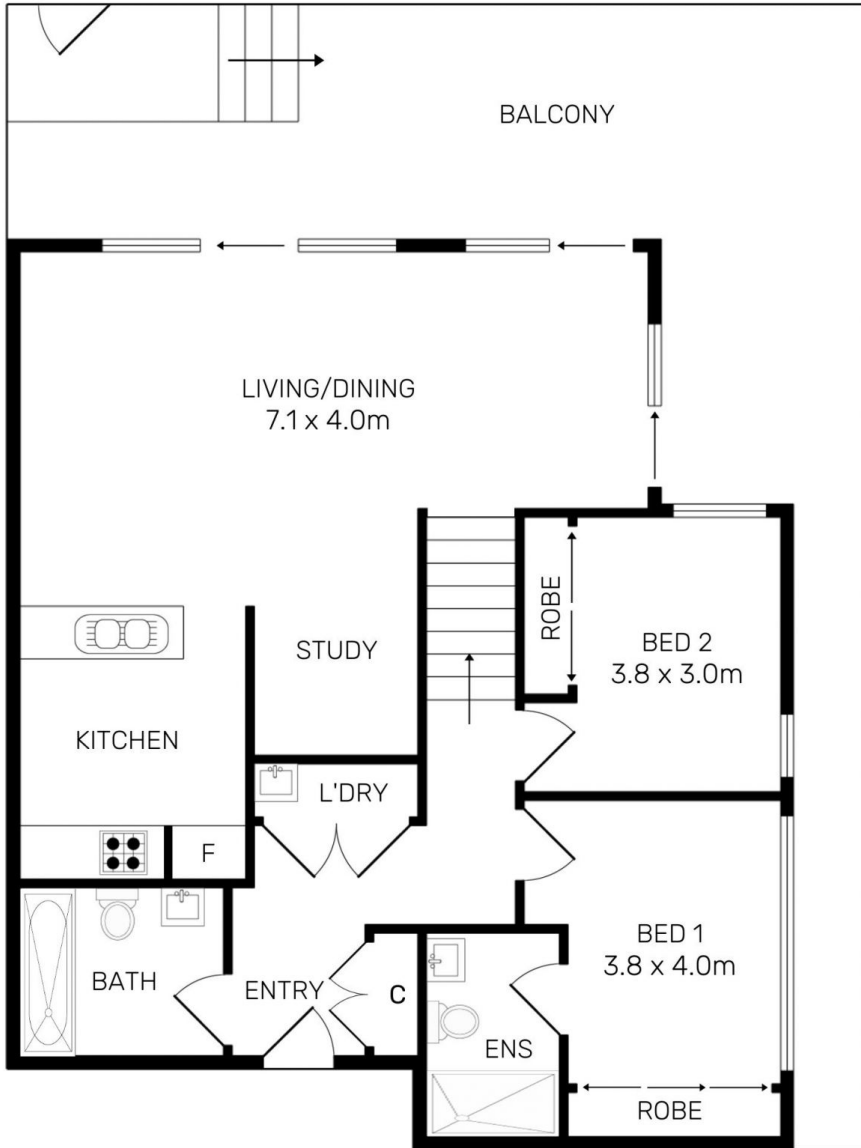
Agents

Dylan Choe

 0416 932 977
 dylanchoe@morton.com.au

Calvin Chan

 0406 888 028
 calvin@morton.com.au



All information contained herein is gathered from all sources we believed to be reliable. However we cannot guarantee its accuracy and interested parties should rely on their own inquiries.



103/45 Hill Road, Wentworth Point