



morton.

Redfern C317/8 Crescent Street



Positioned in the award-winning complex Moore Park Gardens, this luxurious oversized dual level ticks all boxes when it comes to an effortless inner-city lifestyle. Cleverly designed with a focus on low maintenance living and entertaining, it spans two spacious levels enhanced by plush carpet and quality finishes. The open plan living/dining areas spill out to a private entertainers courtyard. Surrounded by impeccably landscaped gardens and with access to resort-style facilities, it is positioned within footsteps of shops, bars, popular cafes and public transport.

- Dual level residence
- Oversized bedroom with built in robes
- Kitchen equipped with gas appliances
- Large entertainers courtyard
- Open plan living/ dining area
- Access to resort-style facilities including pool, gym and sauna
- 87 sqm on title
- Internal laundry

morton.com.au

View

As advertised or by appointment

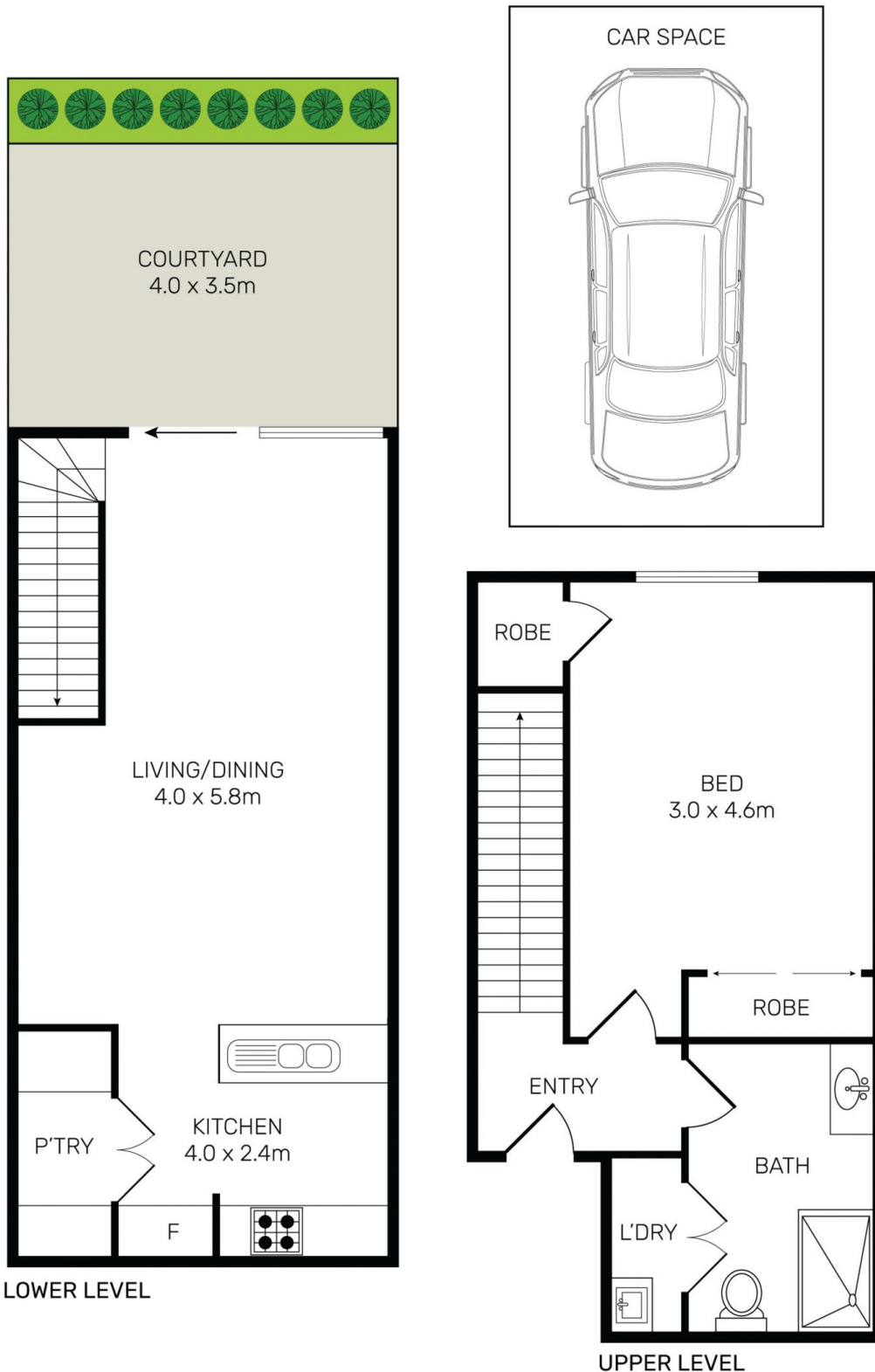
Agents

Calvin Chan

📞 0406 888 028
✉ calvin@morton.com.au

Jackson Figueiras

📞 0448 764 345
✉ jackson@morton.com.au



All information contained herein is gathered from all sources we believe to be reliable. However we cannot guarantee its accuracy and interested parties should rely on their own enquiries.

