



morton.

Zetland 616/5 O'Dea Avenue

🛏 2 🚿 1 🚗 1

Sold by Calvin Chan 0406 888 028

In the heart of the immensely popular Zetland community just minutes to the city and airport, this deluxe two-bedroom residence displays contemporary sparkle and easy convenience. It sits in an elevated position with city views and features a generous single level floorplan that's ideally configured to meet the needs of low maintenance lifestyle seekers.

- North facing with city views
- Walking distance to Green Square train station & East Village shopping centre
- Moments from Joynton Park
- Sought after complex designed by boutique luxury architects Stanisic Architects
- Smeg appliances throughout entire apartment
- Luxurious heated rooftop pool (exclusive access to Building 1 only), lap pool and Balinese styled pool with heated jacuzzi
- Kids park complex a stone throw away with in-house pet

morton.com.au

View

As advertised or by appointment

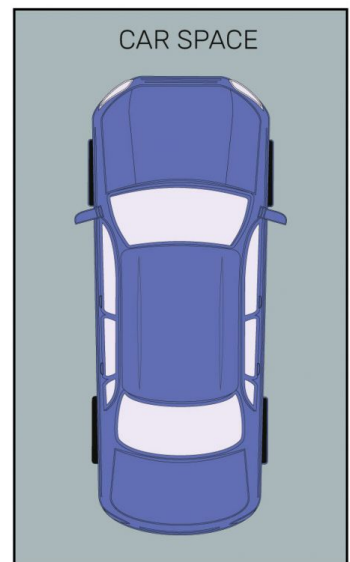
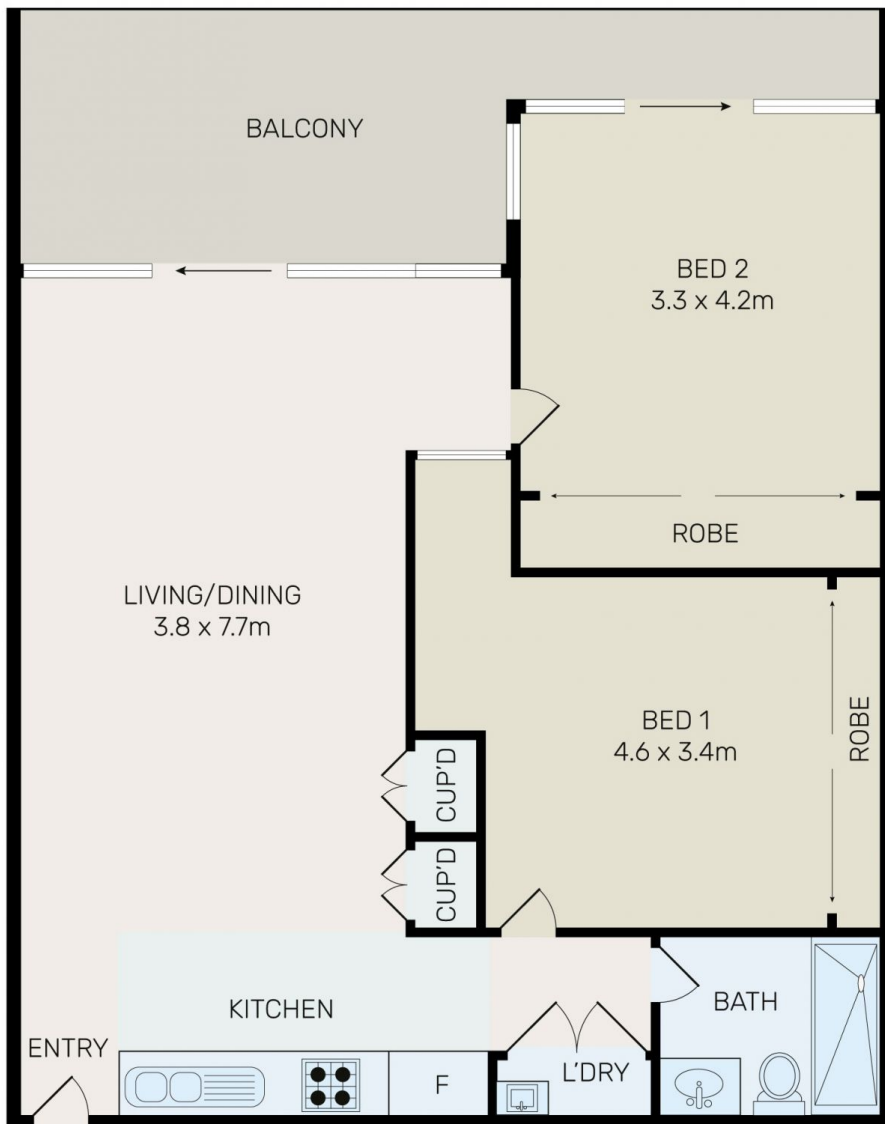
Agents

Calvin Chan

📞 0406 888 028
✉ calvin@morton.com.au


Jackson Figueiras

📞 0448 764 345
✉ jackson@morton.com.au



All information contained herein is gathered from all sources we believe to be reliable. However we cannot guarantee its accuracy and interested parties should rely on their own enquiries.



 CampaignPROS

morton.

Zetland 616/5 O'dea Avenue