



morton.

Lane Cove North 1/5-7 Murray Street



Combining the feel of a house with the convenience of an apartment, this huge one-bedroom apartment is truly unique. Boasting vast gourmet open plan indoor/outdoor entertaining in a peaceful, leafy setting, it flows out to a lush garden that is maintained by strata, private and is unlikely to be used by any neighbours. Located within a 10-minute stroll to bus and rail transport, and handy to parks, Lane Cove Village and Westfield Chatswood, it's ready to move straight into and enjoy.

- Open plan living and dining area
- Flows straight to a covered entertaining terrace with further access to the common garden area
- Gourmet kitchen featuring stylish stone benchtop and gas appliances
- Stainless steel appliances including oven and dishwasher
- Large bedroom with built-in mirrored wardrobe with outdoor access
- Modern and fully-tiled bathroom
- Secure lock-up garage with remote control and lift access

morton.com.au

View

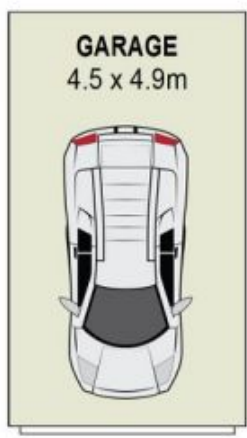
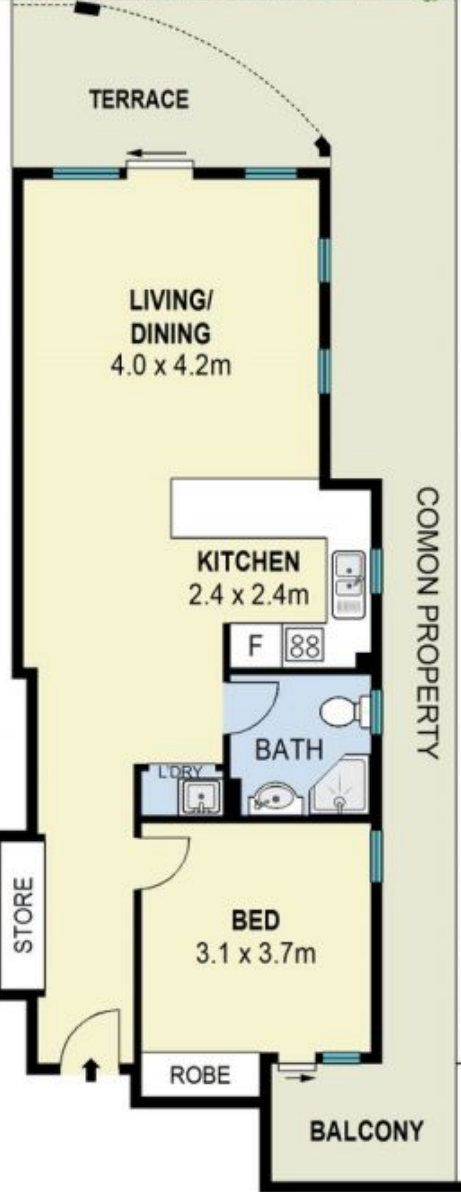
As advertised or by appointment

Agent

Joseph Youll

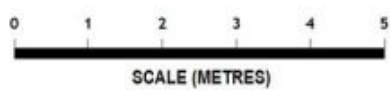
📞 0410 593 248

✉ joseph.youll@morton.com.au



Basement

Elevated Ground Floor



1/5-7 Murray Street, Lane Cove

INT : 54m²

Scale metres. Indicative only. Dimensions are approximate. All information contained here in is gathered from sources we believe to be reliable. However we cannot guarantee its accuracy and interested persons should rely on their own enquiries.