



**morton.**

**Hurstville** 802/456 Forest Road

 1  1  1

Architecturally designed apartment features stunning floor to ceiling glass doors that seamlessly opens to a private balcony with expansive skyline city views. Conveniently positioned in the heart of Hurstville within minutes to shops, schools and public transport.

- Quality finishes throughout
- High level apartment, located on level 8
- Tiled flooring and timber flooring in the bedroom
- Built-in wardrobe
- Sydney CBD skyline view
- Set within a boutique secure complex with lift access
- Designer kitchen with European stainless steel appliances and stone benchtop
- Internal laundry + dryer
- Split system air-conditioner

**View**

As advertised or by appointment

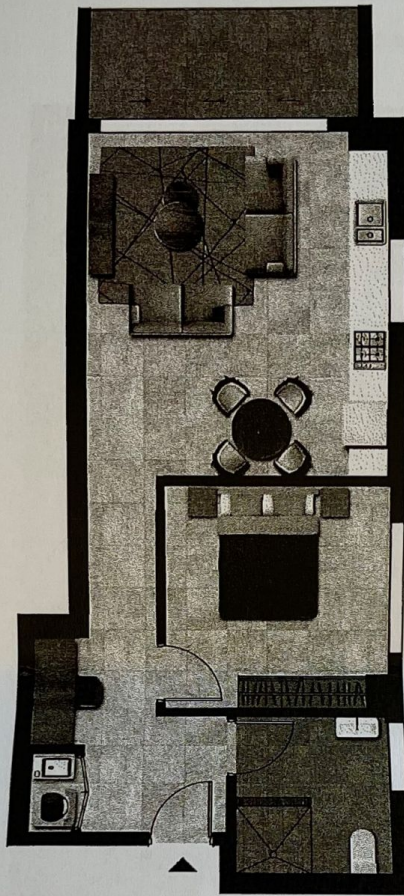
**Agent**

**Lisa Xi**

 0401 311 667

 rentals@morton.com.au

**morton.com.au**



**APARTMENT TYPE F**  
**1 BED. 1 BATH**

Internal Area: 57.5m<sup>2</sup>  
Total Balcony Area: 8.3m<sup>2</sup>  
Parking: 1



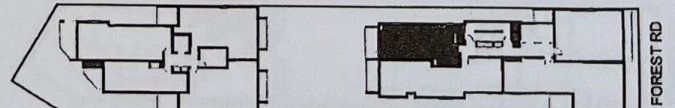
**Note:**  
-Area of unit include balcony and/or Private Open Space are subject to final survey. Area excludes parking and external storage areas.  
-Windows/Doors/Sliding doors locations are Indicative only.  
-Windows along boundary are for articulation only. These windows are not operable or translucent

**454-456 FOREST ROAD HURSTVILLE**

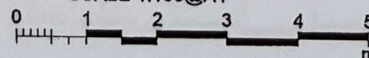
**Disclaimer:** The information and illustrations in this media are indicative only and are subject to change. TOP PACIFIC GROUP developments and companies related to it and its agents do not warrant the accuracy of the information or illustration and do not accept any liability for any error or discrepancy in that information. The information and illustrations displayed in this media will not form part of any contract of sale. Interested parties must rely on their own inquiries and the information in the contract for sale for the featured development.

LEVEL	UNIT
L3	U15
L4	U19
L5	U23
L6	U27
L7	U31
L8	U35

**LOCATION PLAN**



SCALE 1:100@A4



**TOP • THE FOREST**