



morton.

Wentworth Point 729/1 Burroway Road

 2  2  1

Jewel is the new and iconic gateway that connects the Sydney Harbour to Wentworth Point. Ideally positioned at the northern tip of the peninsular, Jewel is opposite to the ferry wharf, bus stops and rests above the Pierside retail precinct that includes restaurants, health care, beauty and an IGA supermarket.

- Modern two bedroom apartment with ceramic timber look tile
- Gas kitchen with stone/Corian benchtops, soft closing cupboards
- LED lighting, split system reverse cycle air conditioning
- Open living and dining with timber look ceramic tiles
- Lounge room with gas point and MATV and payTV points
- Wool-blend carpeted bedrooms, mirrored built-in robes
- Internal laundry with dryer, audio intercom with security and lift access
- Bathroom/ensuite with ceramic wall and floor tiles, mirrored vanity cabinet
- Large covered balcony
- Basement secure parking & storage cage
- On-site building manager, common landscaped courtyard

morton.com.au

View

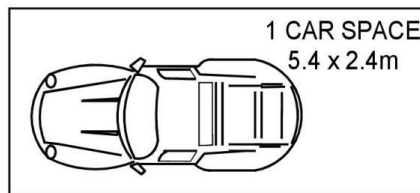
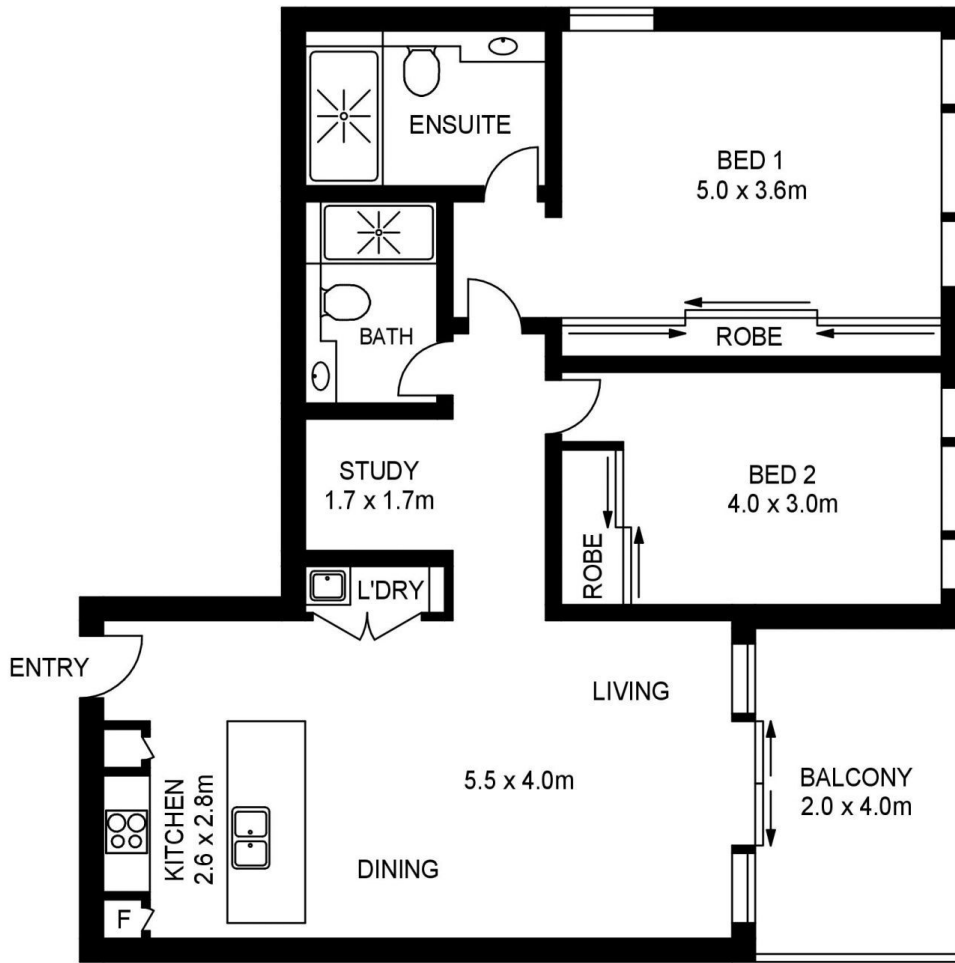
As advertised or by appointment

Agent

Nevena Tsahtarlis

 0428 835 910

 nevena@morton.com.au



**BASEMENT
LEVEL THREE**



**BASEMENT
LEVEL THREE**

729/1 BURROWAY ROAD, WENTWORTH POINT



www.assetphotographers.com.au

Please note these measurements are approximate only. The plans is intended as a rough guide for illustrative purpose. It is not warranted or guaranteed to be correct nor it is part of the sale or rental contract