



morton.

Ermington 508/48-56 Bundarra Street

 3  2  2

Located in the new urban hub of Royal Shores, Safari offers lifestyle apartment living within the masterplanned community in Ermington. Perched on the waters edge, Safari offers easy access to the river, cycleway and parks.

APARTMENT FEATURES

- Reverse cycle air conditioning
- Spacious floorplan with house-like proportions & high ceiling
- Penthouse level apartment with water facing aspect
- Two car spaces
- Quality ceramic timber look tile
- Gourmet kitchen with quality SMEG Stainless steel kitchen appliances
- Stone bench tops & splash backs
- LED under cupboard lighting
- Wool blend carpets, efficient LED down lights
- Data/TV points in living and main bedroom
- Recessed mirrored cabinets in bathroom
- Security building, video intercom

View

As advertised or by appointment

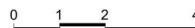
Agent

Nevena Petrovic

 0428 835 910

 nevena@morton.com.au

morton.com.au



JOINTLY DEVELOPED BY



Disclaimer: This floor plan has been prepared for marketing purposes only. All descriptions, dimensions, depictions and other details in this floor plan may not be to scale and may vary from the property as built. Your attention is drawn to the special conditions of the contract for sale of land. No third party has any authority to make or give any representation or warranty in relation to the property unless the representation or warranty is confirmed by the vendors and included in the contract for sale of land. Date Issued: 13/02/15 Revision: D

SALES BY



ROYAL SHORES
SYDNEY HARBOUR

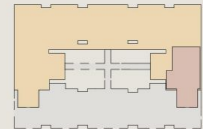
SAFARI I



**APARTMENT 508
LOT 58**

3 BEDROOM

| | |
|--------------|----------------|
| Internal | 108 sqm |
| External | 30 sqm |
| Total | 138 sqm |



SAFARI I - LEVEL 5

ROYAL SHORES DISPLAY CENTRE
1 Bundarra Street, Ermington NSW 2115
P 1300 888 558 W royalshores.com.au