



# morton.

**Penrith** 901/81A Lord Sheffield Circuit

 2  2  1

Bright, spacious and superbly presented, this impressive top floor two-bedroom unit combines lifestyle appeal with a sleek modern style and views that stretch out to the Blue Mountains. Quietly positioned in a well-designed complex, it offers a great home for low-maintenance seekers because of its extra-large layout, quality up-to-date finish and excellent location within a sought-after master-planned community.

- A spacious layout featuring 91sqm in/outdoor living space
- Bright and airy open design with lounge and dining areas
- A wide covered terrace offers a great space for entertaining
- An elevated 8th floor outlook over the station to the mountains
- Designer kitchen with island bench and s/steel gas fittings
- Two good-sized bedrooms, two bathrooms and a study area
- Air con throughout, stylish blackout and sunscreen roller blinds
- Security basement car space, lift access and intercom entrance
- No pets

[morton.com.au](http://morton.com.au)

### View

As advertised or by appointment

### Agent

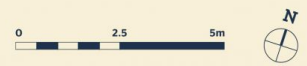
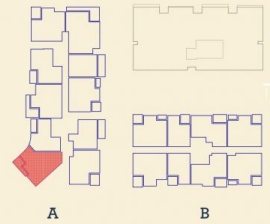
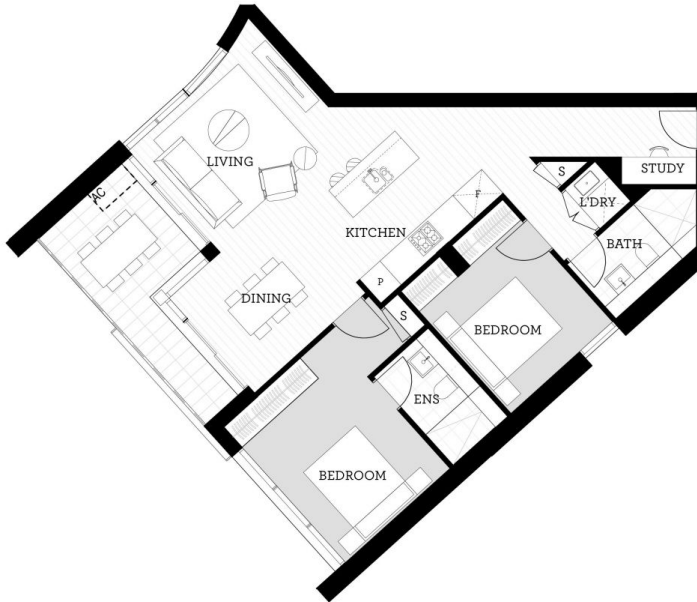
**Amy Torbarina**

 0438 977 172

 [amy@morton.com.au](mailto:amy@morton.com.au)

*Apartment*

2 BED- A 901



Internal	80 m <sup>2</sup>
External	10 m <sup>2</sup>
<b>Total</b>	<b>90 m<sup>2</sup></b>

DATE ISSUED 27/07/2015  
VERSION 02

Developed by St Hilliers FIRST POINT PROJECTS | Sales by LINK Home & Land Direct [thorntoncentral.com.au](http://thorntoncentral.com.au)

**Disclaimer:** This floor plan has been prepared for marketing purposes only. All descriptions, dimensions, depictions and other details in this floor plan together, the "Information" may not be to scale. The vendor reserves the right to vary or amend the Information without notice. The Information may vary from the actual dimensions, layout and characteristics of the property as built. No third party has any authority whatsoever, either expressly or impliedly, to make or give any representation or warranty or to bind the vendor in connection with the information or the property.

**THORNTON**