



morton.

North Sydney 101/245 Pacific Highway

 2  2  1

Set in a superb location convenient to both local/CBD transport and a cosmopolitan lifestyle where you are moments walk away from cafes, restaurants and minutes drive to the CBD is one of the newest additions to the North Sydney property market - Montrose North Sydney.

- Near new with quality fixtures and finishings
- Spacious open plan living and kitchen area
- Modern kitchen with island bench, gas cooking and dishwasher
- Superb floor plan, with natural light throughout
- Sizeable enclosed balcony, with glass louvres
- Master bedroom with built-ins and ensuite
- Second bedroom with built-ins and private courtyard
- Stylish bathroom with exceptional storage
- Large storage cupboards in living space
- Located on the first floor with Eastern aspect
- Internal laundry with dryer
- Under cover secure car space and storage cage
- Secure building, intercom and lift access


View

As advertised or by appointment

Agent

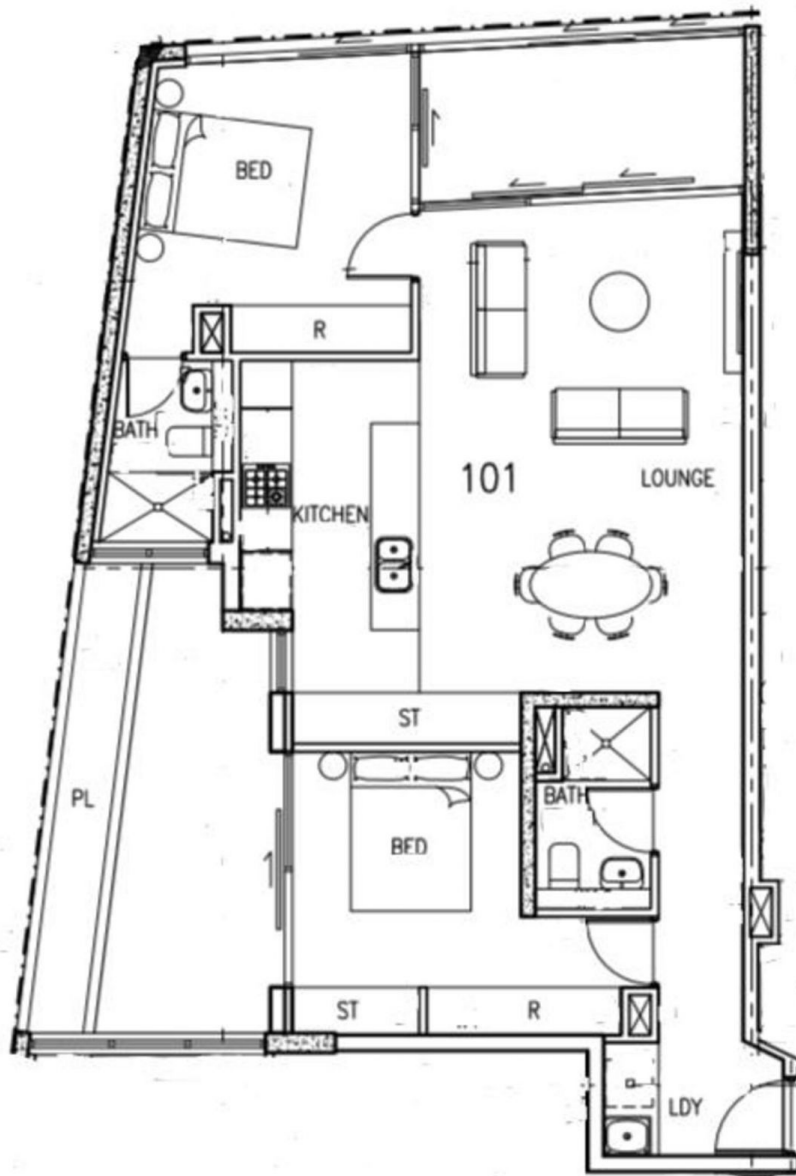
Joseph Youll

 0410 593 248

 joseph.youll@morton.com.au

morton.com.au

morton.



101/245 Pacific Highway, North Sydney