



**morton.**

**Kensington** 37/1-7 Gloucester Place

 2  1  1

Urban convenience meets resort-style living in this stylish courtyard apartment in the 'Gloucester Gardens' estate. Tucked away in a quiet cul-de-sac, this ground floor apartment is set to the rear in the Windsor Court building with secure level access and a north facing courtyard giving it an inviting house-like feel. Stylish interiors are anchored by engineered Oak floors with a choice of outdoor living areas and a great layout featuring separate living and accommodation zones. A spacious 110sqm layout plus parking makes for comfortable contemporary living with level access to a resort-style pool set amid carefully manicured landscaped gardens. It's 650m to the light rail with close proximity to East Village, Centennial Park and village life.

- Secure entry shared by only six apartments, undercover parking
- Two double bedrooms with large built-in wardrobes
- Spacious open layout, dedicated living and dining areas
- Granite kitchen with a breakfast bar, integrated appliances
- Northerly facing courtyard and a balcony off the living area



**morton.com.au**

#### View

As advertised or by appointment

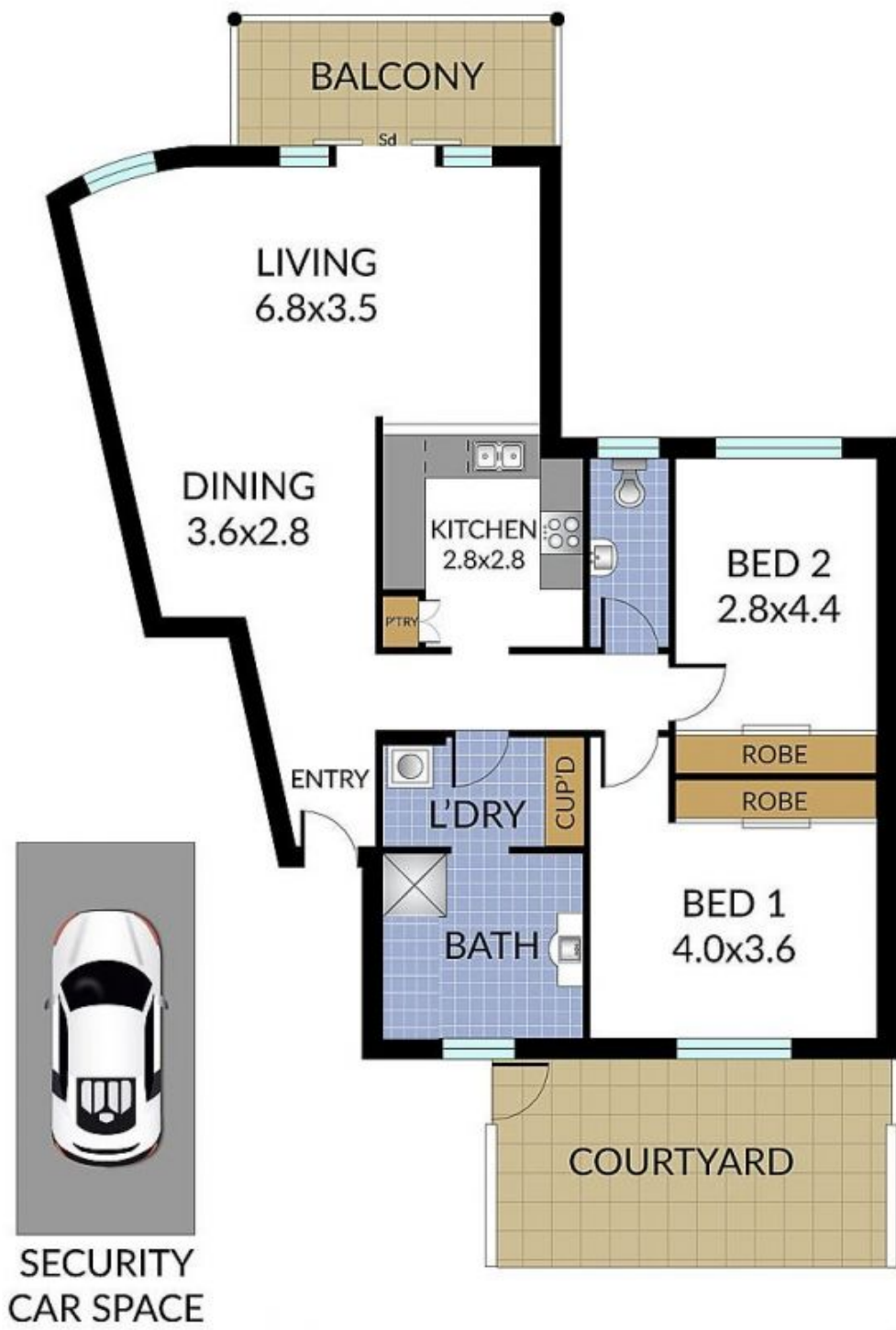
#### Agents

##### Sarah Fowell

 0437 492 129  
 sarah@morton.com.au

##### Kristian Karaspyros

 0436 477 102  
 kristian.karaspyros@morton.com.au



This diagram is for illustrative purpose only. All reasonable care has been taken in the preparation, but no warranty is given to the accuracy of the information. This document does not constitute any part of any offer of contract. Dimensions shown are approximate only. Prospective purchasers must rely on their own enquiries.