



morton.

Sydney 52.05/117 Bathurst Street

 2  2

Elegant and stylishly designed, the 'Greenland Centre' in Sydney CBD is the epitome of luxurious living. This property is the hallmark of cosmopolitan residences, which will set a new benchmark for style and comfort. Located in one of Sydney's tallest residential towers, you will enjoy stunning panoramic views from the entire property.

- Brand new apartment and never lived in before
- Open plan living and dining flowing onto a covered entertainer's balcony
- Covered balcony ideal for entertaining with stunning views
- Spacious bedrooms with built-in wardrobes
- Master bedroom with ensuite and balcony access
- Modern kitchen with Miele appliances, marble benchtop
- Gas cooking and integrated Fisher & Paykel refrigerator
- High quality timber flooring in the living space
- Internal laundry with washer and dryer, NBN ready
- Ample internal storage throughout the property
- Resort style facilities including, pool, gym, spa and cinema
- Close to shops, cafes, restaurants and public transport

morton.com.au

View

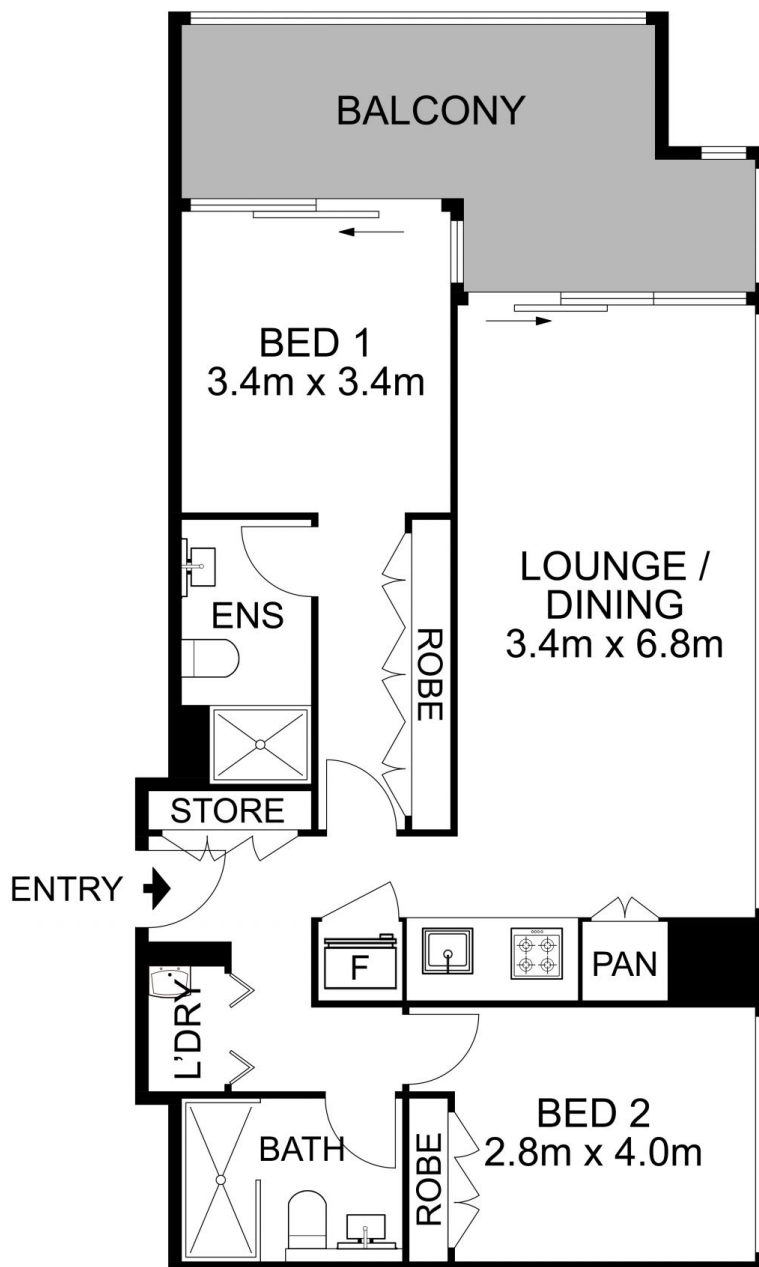
As advertised or by appointment

Agent

Kristian Karaspyros

 0436 477 102

 kristian.karaspyros@morton.com.au



All information contained herein is gathered from all sources we believe to be reliable. However we cannot guarantee its accuracy and interested parties should rely on their own enquiries.



morton.

Sydney 5205/115-117 Bathurst Street